



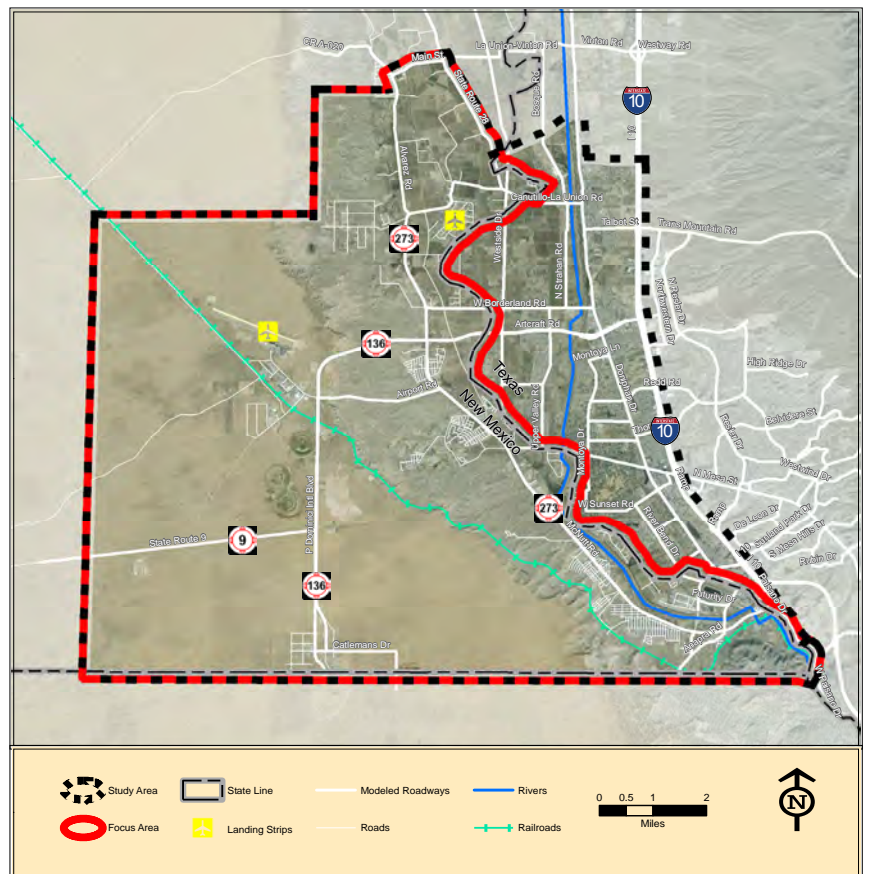
# Santa Teresa

Border Area Transportation Needs Assessment & Strategic Plan



## INTRODUCTION

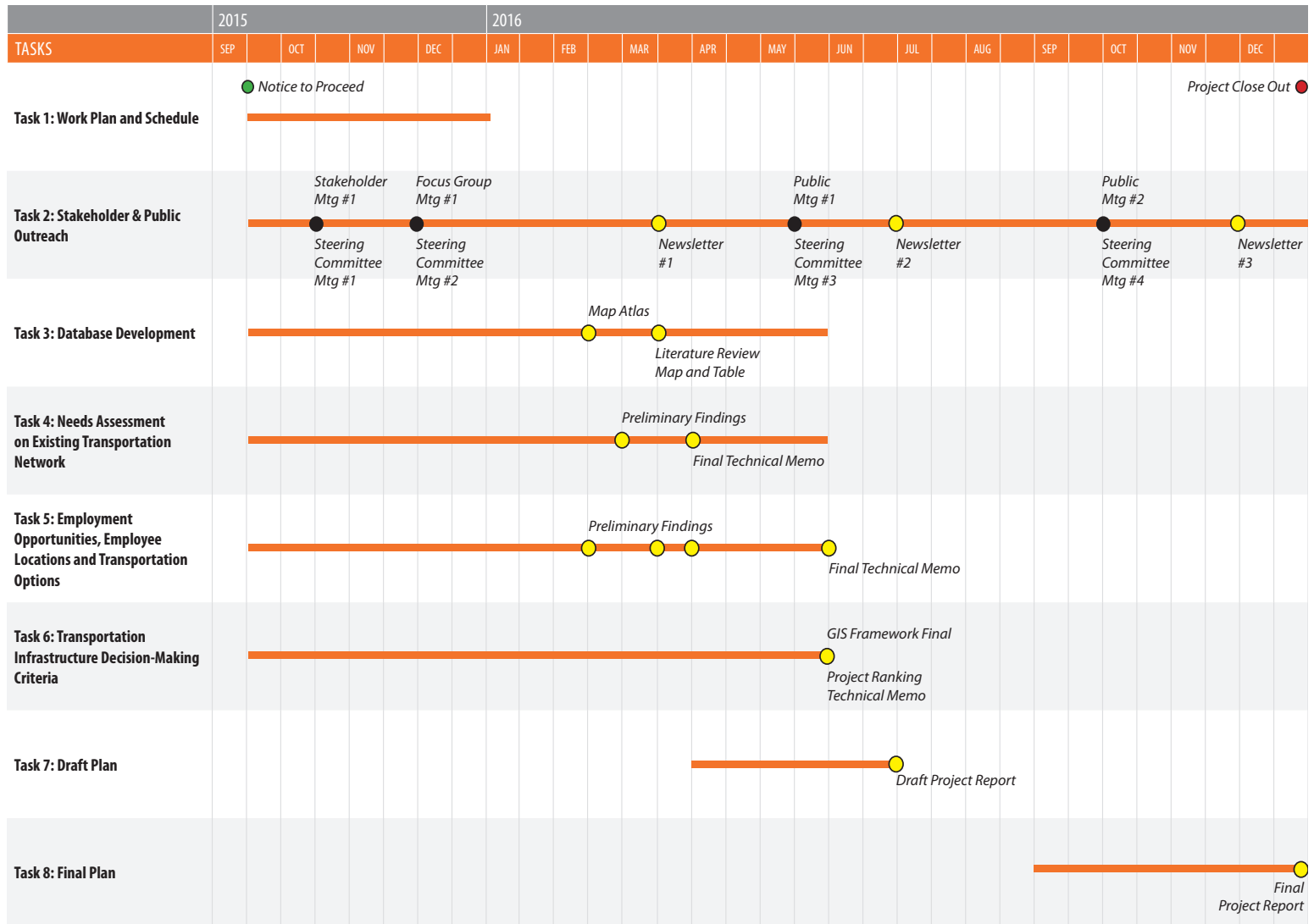
The Santa Teresa Border Area Transportation Needs Assessment and Strategic Plan (STBAT) will be a guiding document designed to contribute to effective decision-making strategies for transportation infrastructure in the Santa Teresa Border Area. The study is funded by a Transportation Investment Generating Economic Recovery (TIGER) grant from the United States Department of Transportation (USDOT), and, consistent with the objectives of that grant, the study examines potential long-term outcomes related to economic competitiveness, quality of life, state of good repair, safety and environmental sustainability. Given the proximity to the U.S.-Mexico international border and the significant economic changes – current and projected – in the New Mexico, Texas and Chihuahua Tri-state region, a specific emphasis of the study is the nexus between employment opportunities and transportation infrastructure, in particular investment in regional transportation projects that will ensure proactive transportation planning related to regional economic development.



The STBAT represents the first attempt to aggregate all previous regional plans, studies and reports and determine the highest priority transportation infrastructure projects for the Santa Teresa border region based on the considerations mentioned above. The study is multi-modal in nature, and while there is by necessity a strong emphasis on freight mobility, other transportation modes such as personal vehicles, transit, pedestrian and bicycle facilities are included as they are important factors in defining economic development opportunities in the region. The process of determining the highest priority recommendations is supported by a Needs Assessment of the existing transportation infrastructure network that identifies current and projected economic development growth and needs. **Ultimately, the study is designed to provide local, regional, state, and national entities with concrete, viable recommendations to guide their policy decisions given identified constraints and opportunities.**



## PROJECT SCHEDULE



### Contact



1-800-457-3445



santateresaplan@wilsonco.com



santateresaplan.com



facebook.com/santateresaplan



twitter.com/SantaTeresaPlan

