

UNIVERSITY AVENUE Preliminary Design

PUBLIC MEETING
March 3, 2020



U.S. Department of
Transportation
**Federal Highway
Administration**

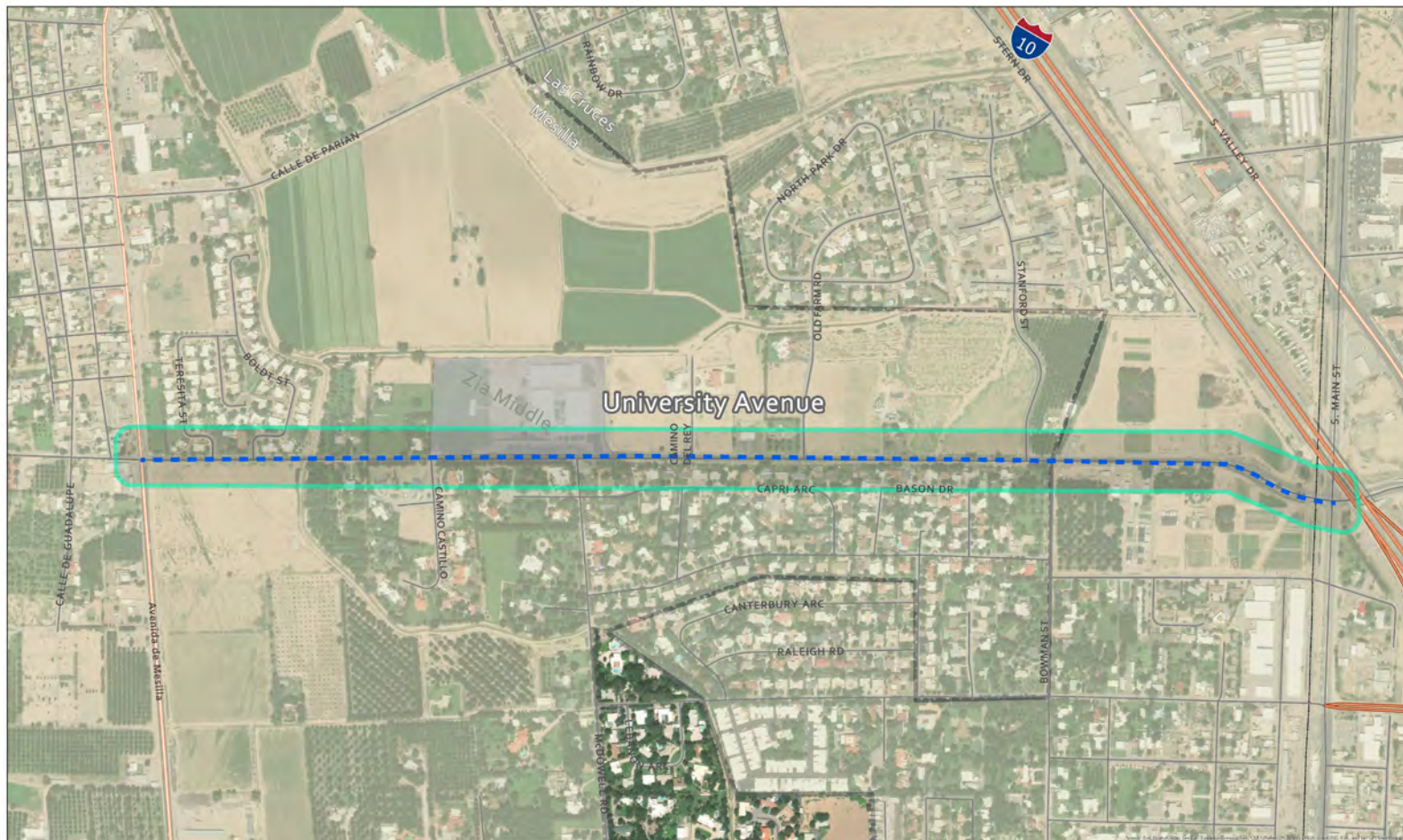


New Mexico DEPARTMENT OF
TRANSPORTATION

Bohannon  **Huston**

AGENDA

- ▶ Purpose and Need
- ▶ Project Background
- ▶ Preliminary Design
- ▶ Next Steps



PURPOSE AND NEED

PURPOSE

Provide an enhanced multi-modal transportation corridor

NEED

- ▶ Safety concerns due to potential pedestrian/bicycle/vehicular conflicts
- ▶ Physical deficiencies due to lack of shoulders, pedestrian facilities, and bicycle facilities
- ▶ Potential for economic development opportunities as a result of improving connectivity

PROJECT BACKGROUND

- ▶ The University Avenue Phase A Corridor Study was completed in 2016
- ▶ The Phase B Corridor Study was completed and approved in Fall 2019
- ▶ Draft Phase C Environmental Analysis is completed & awaiting NMDOT approval
- ▶ Phase D Preliminary Design was completed in January 2020
- ▶ **Initiating Final Design**

PREVIOUS PUBLIC INVOLVEMENT

- ▶ **Phase A** – Initial Evaluation of Alternatives
 - ▶ June 2015
 - ▶ October 2015
- ▶ **Phase B** – Detailed Evaluation of Alternatives
 - ▶ June 2019
 - ▶ September 2019

RECOMMENDATIONS FOR DESIGN

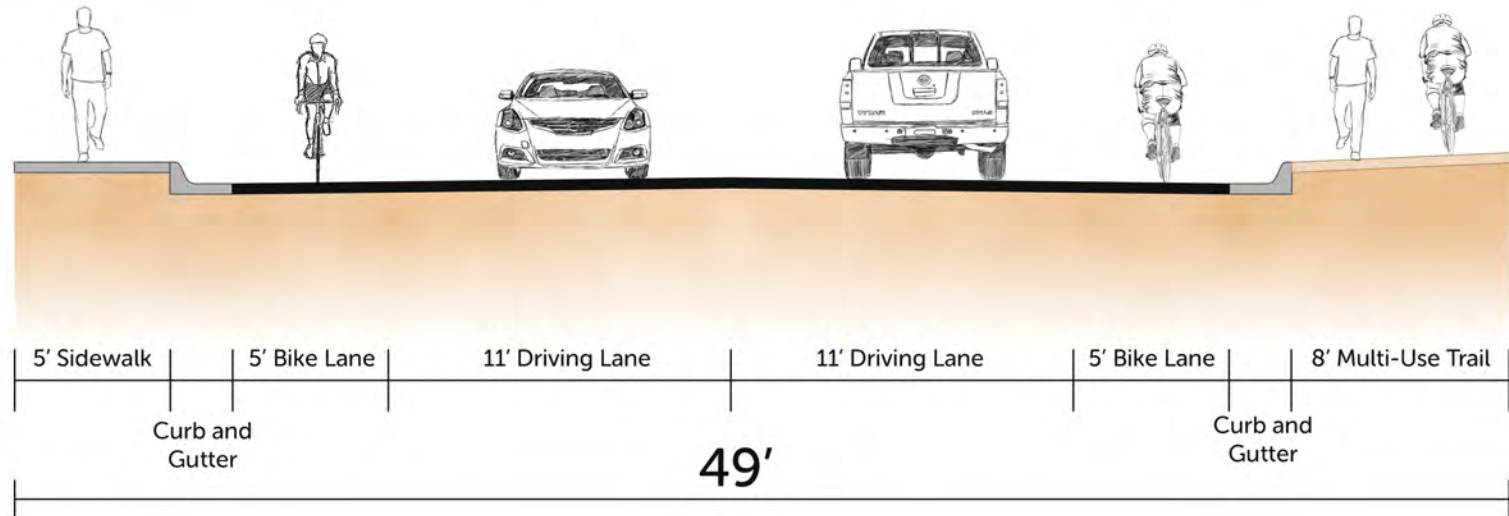
- ▶ **Roadway**

- ▶ Segment 1 – 11' driving lanes, 5' bicycle lanes, 5' sidewalk (north), 8' multi-use path (south)
- ▶ Segment 2 – 12' driving lanes, 5' bicycle lanes, 6' sidewalk/ 2' buffer (north), 10' multi-use path/ 5' buffer (south)

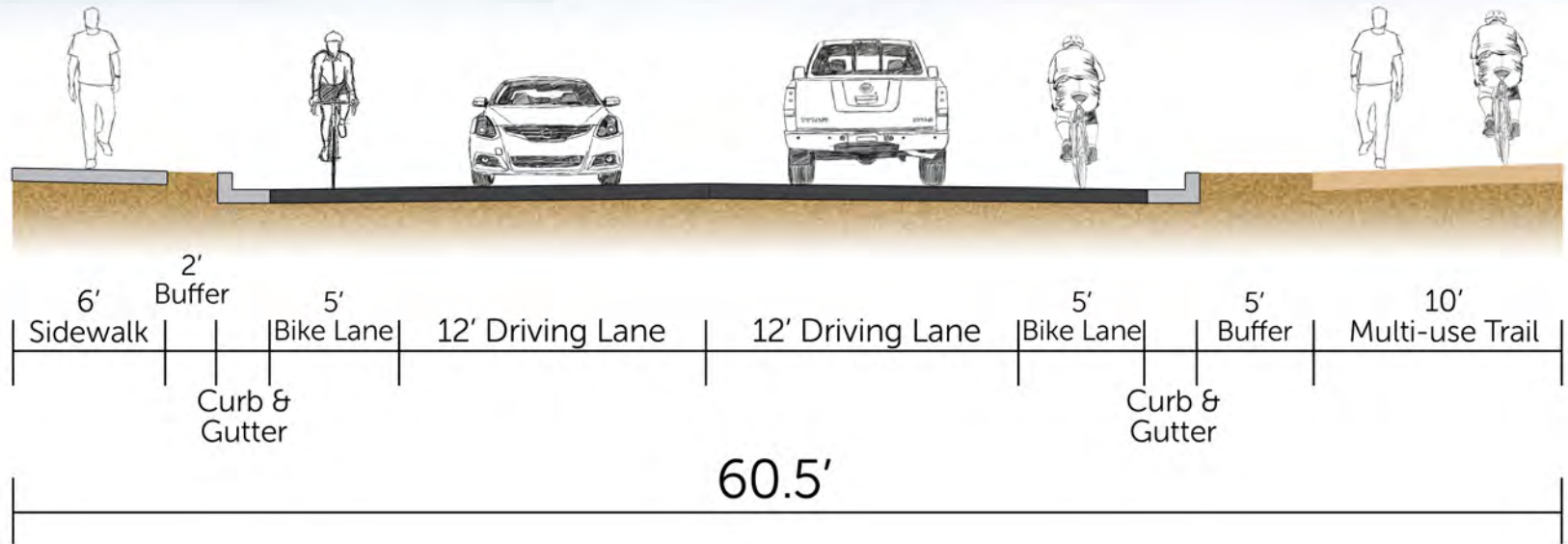
- ▶ **Drainage**

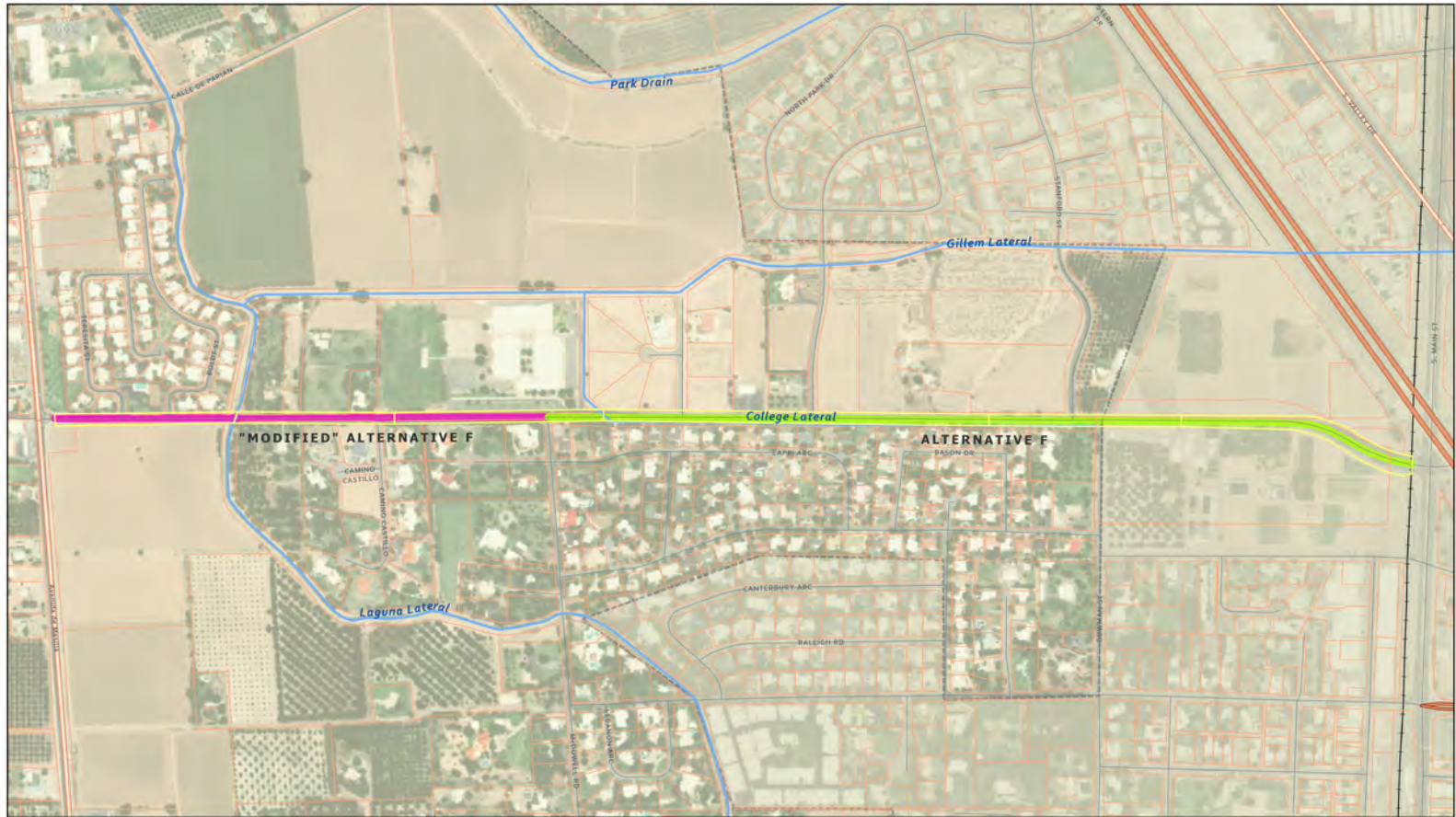
- ▶ Ponding at existing topographic low points

Modified Typical Section F



Typical Section F





PRELIMINARY DESIGN

- ▶ Roadway
- ▶ Drainage
- ▶ Rail Crossing

ROADWAY CONSIDERATIONS

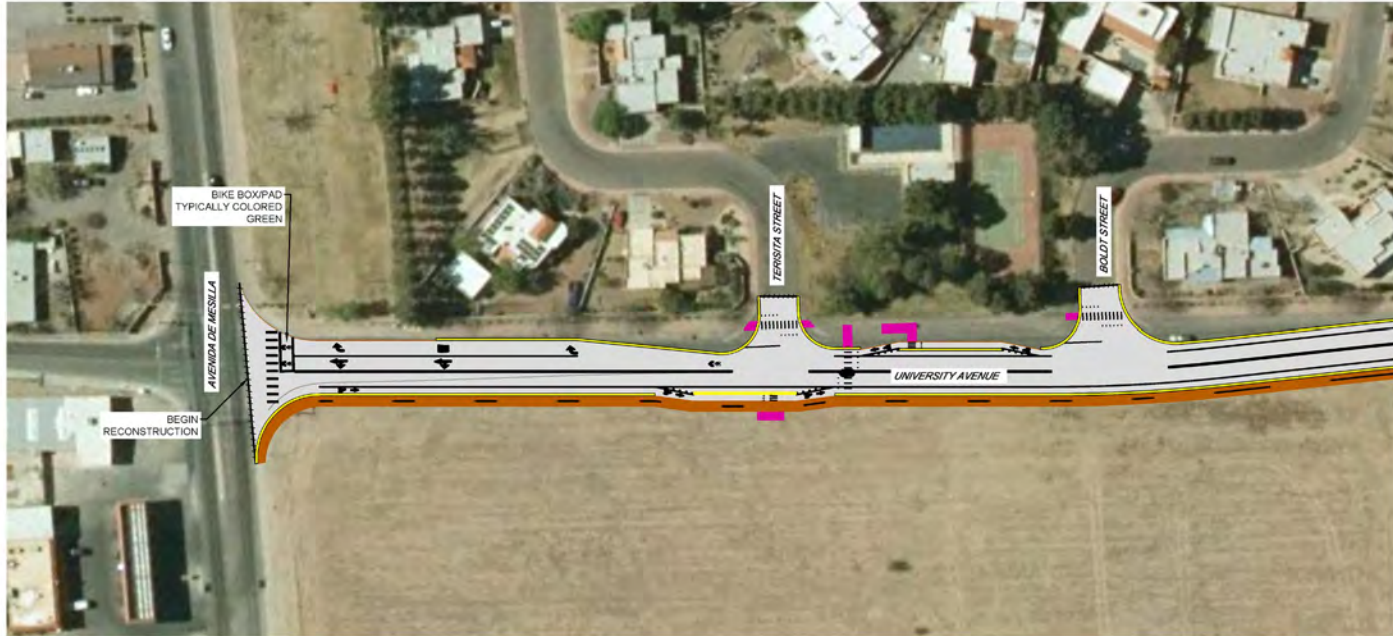
- ▶ Left-turn lane in front of school
- ▶ Location of Crosswalks
- ▶ Bus stops and shelters
- ▶ EBID College Lateral
- ▶ Aesthetics
 - ▶ Integration of existing pavers
 - ▶ Lighting at intersections
 - ▶ Possible Water Harvesting

TURN LANE AND CROSSWALKS

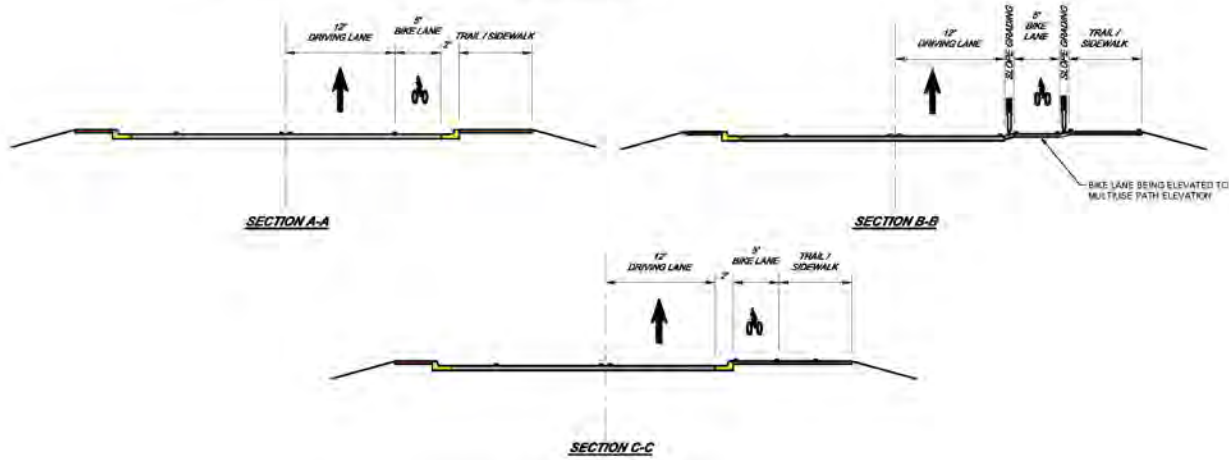
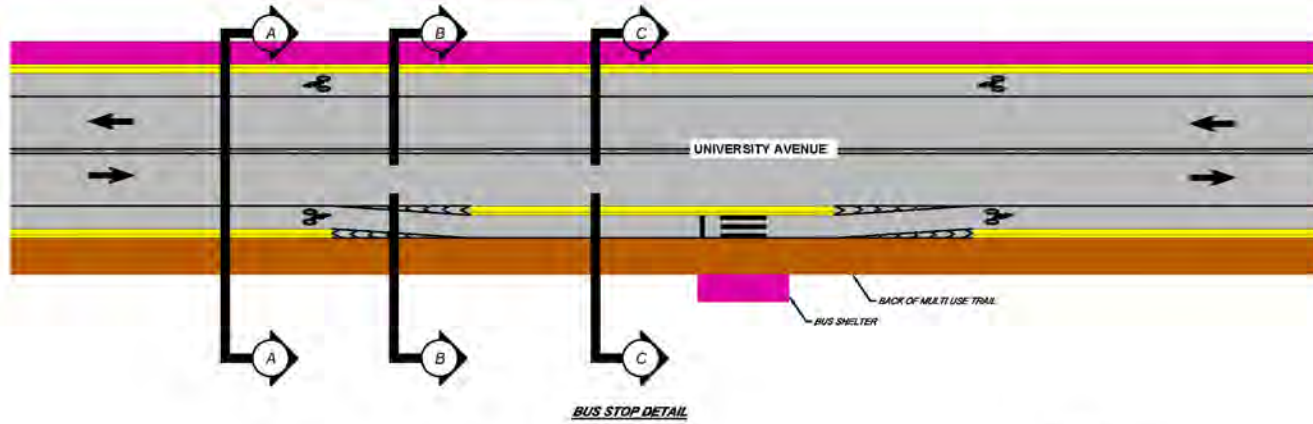




BUS STOP



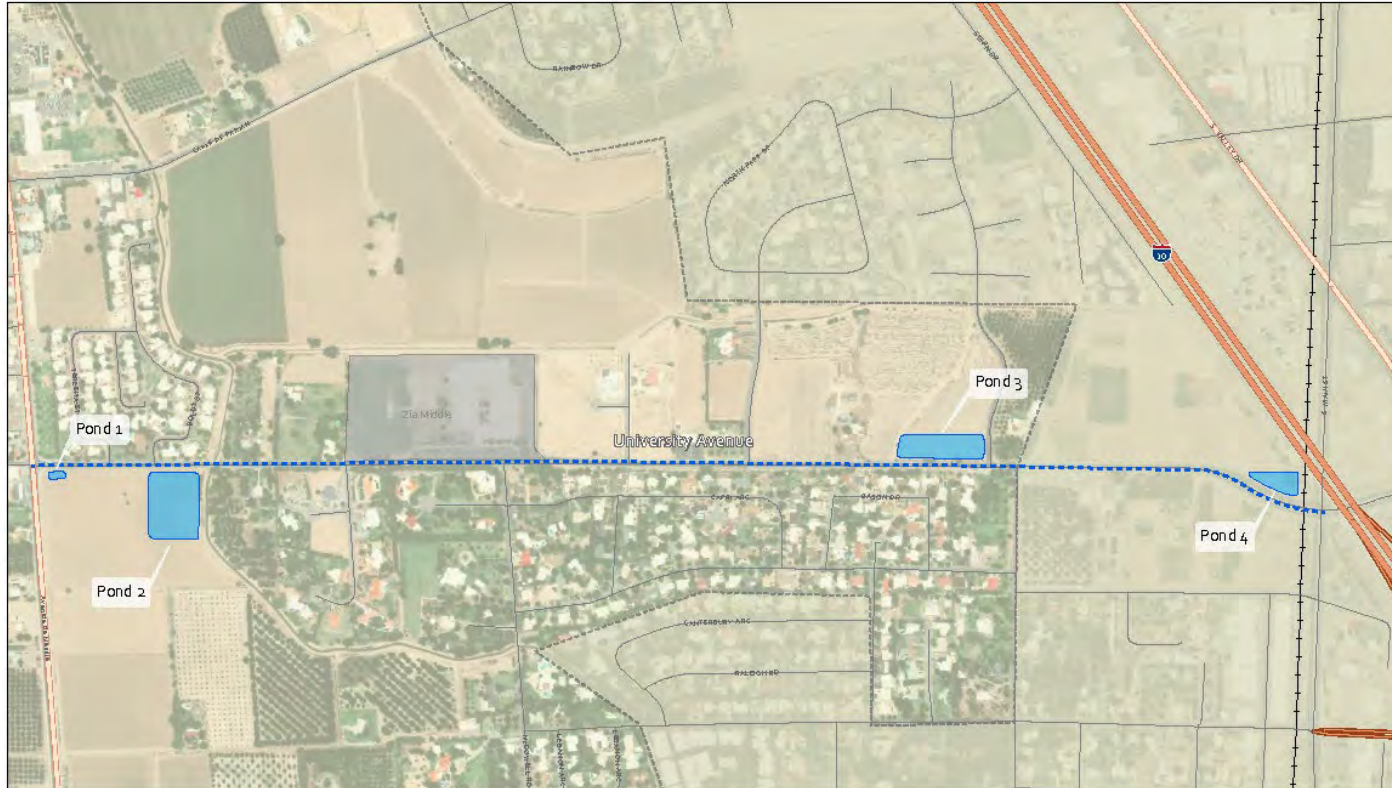
BUS STOP DETAIL





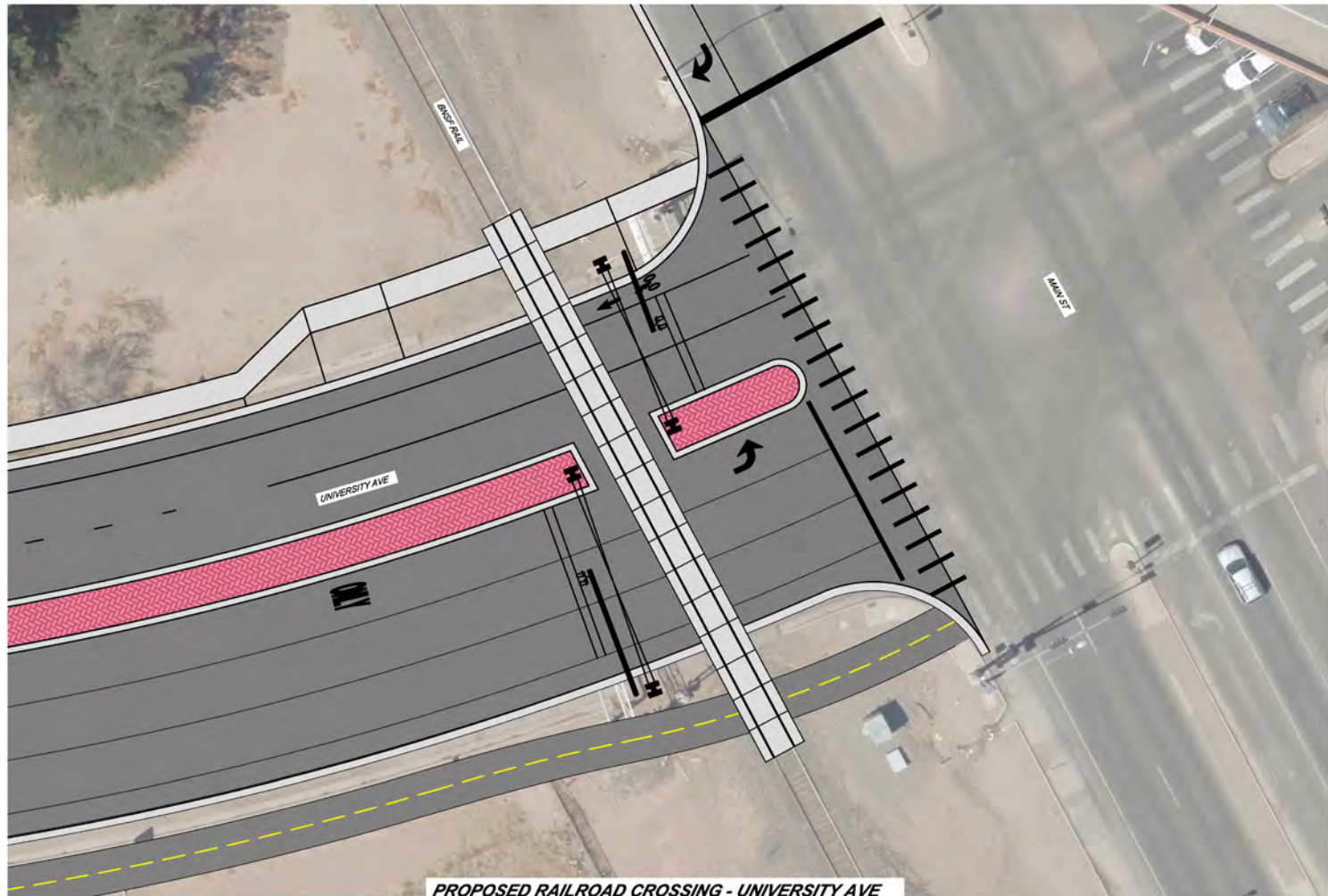


PONDING LOCATIONS



RAIL CROSSING CONSIDERATIONS

- ▶ Ability to safely cross railroad tracks at multi-use path and sidewalk



PROPOSED RAILROAD CROSSING - UNIVERSITY AVE

NEXT STEPS

- ▶ Final Design - Begin this Spring
- ▶ Construction - Scheduled for 2022/2023

QUESTIONS & COMMENTS

Alvin Dominguez, PE (BHI)

adominguez@bhinc.com

Mark Salazar, PE (NMDOT)

mark.salazar@state.nm.us