

# STRIP SEAL JOINT FULL DEPTH REPLACEMENT AT ABUTMENTS

## DESCRIPTION:

REMOVAL OF EXISTING UNSOUND CONCRETE, REBAR AND EXISTING JOINT. FORMING FOR PLACEMENT OF NEW CONCRETE, REINFORCEMENT, JOINT AND COMPONENTS. NEW REINFORCEMENT SHALL BE PAID UNDER PAY ITEM No. 035. IT MAY BE NECESSARY TO CONSTRUCT A HAUNCH TO PROVIDE ADEQUATE COVER TO ACCOMODATE NEW STEEL EXTRUSIONS. AN ALTERNATE JOINT SYSTEM MAY BE USED AS DIRECTED BY THE PROJECT MANAGER.

## LIMITATIONS:

REPLACEMENT WORK TO BE DETERMINED AND AGREED TO BY THE DISTRICT AND THE CONTRACTOR.

## CONSTRUCTION PROCEDURE:

PREPARE SURFACE BY REMOVING ALL DETERIORATED CONCRETE, EXISTING JOINT MEMBERS, DIRT, OIL, GREASE AND OTHER BOND INHIBITING MATERIAL. REMOVAL OF UNSOUND CONCRETE TO BE FULL DEPTH OF THE DECK. THE EXISTING REBAR SHALL BE PRESERVED AND SANDBLASTED TO REMOVE ALL DELETERIOUS MATERIAL AND RESTORED TO ITS ORIGINAL SHAPE, ADD REBAR AS NEEDED. APPLY MATERIAL IN ACCORDANCE WITH MANUFACTURER'S RECOMMENDATIONS. APPLY FINISH TO MEET EXISTING DECK FINISH.

RAPID-SET-CONCRETE MAY BE USED AT THE DISCRETION OF THE PROJECT MANAGER.

UNIT BID PRICE IS FOR THE FIRST 12". THE CONTRACTOR WILL BE PAID FOR ADDITIONAL WORK AS FOLLOWS, IF REPAIR OF ABUTMENT OR FOOTING IS REQUIRED;

ADDITIONAL DEPTH	ADDITIONAL PAYMENT
1"-12"	25%
13"-24"	50%

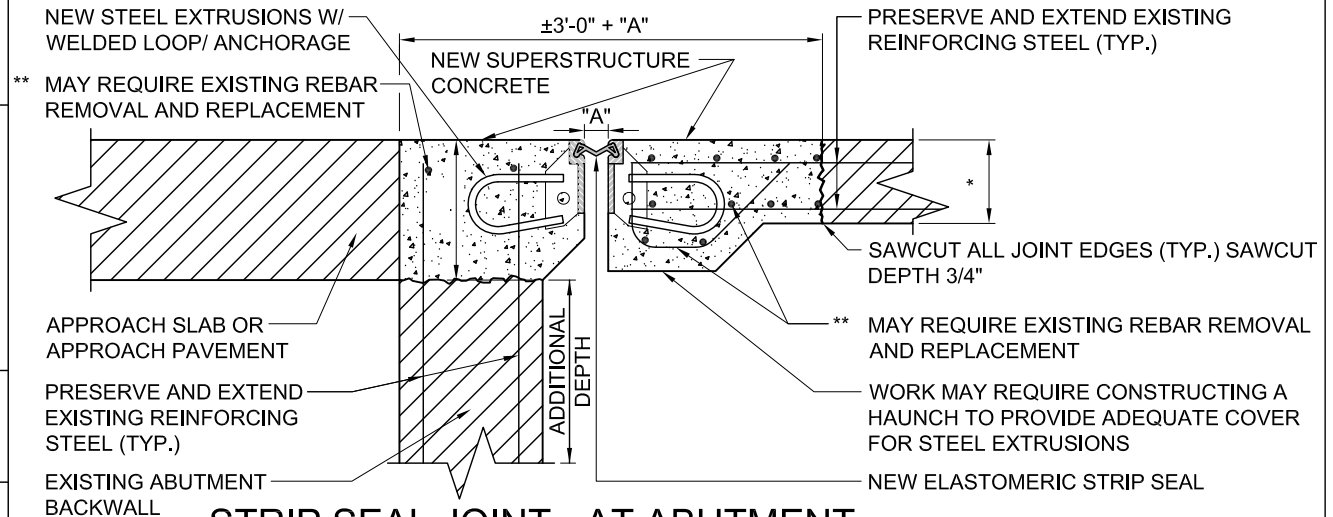
## RESOURCE REQUIREMENTS:

APPROVED EXPANSION JOINT MATERIAL; APPROVED NEW SUPERSTRUCTURE CONCRETE; FORMING PROCEDURES OR APPROVED EQUAL.

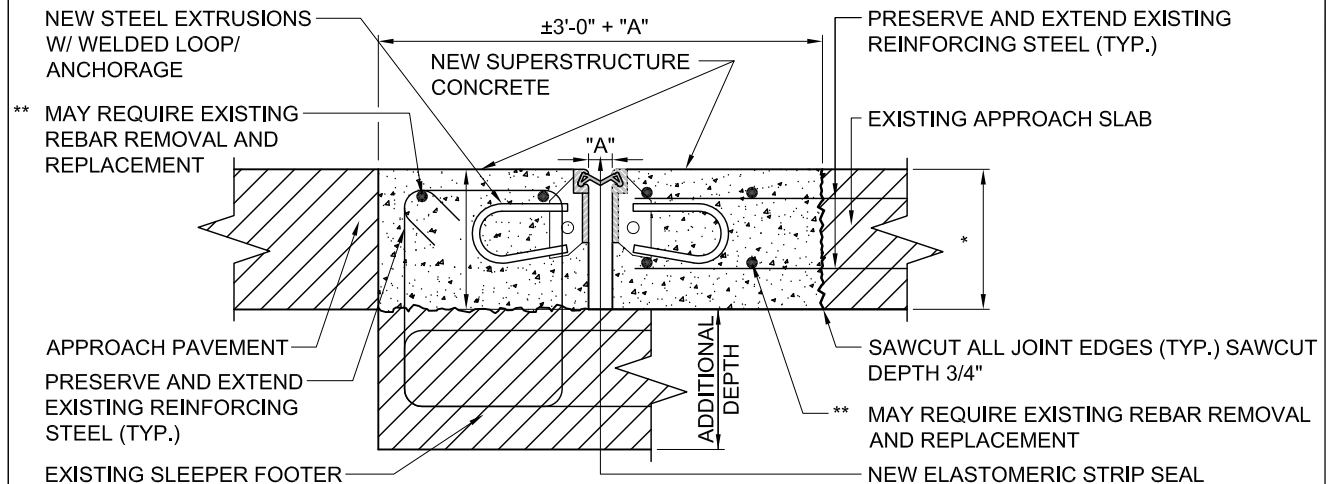
## REFERENCES:

STANDARD DRAWINGS 562-01-1/3 THRU 3/3; SPECIAL PROVISION FOR SECTION 512, SECTION 512, SECTION 540 AND SECTION 562 OF THE NEW MEXICO DEPARTMENT OF TRANSPORTATION STANDARD SPECIFICATIONS FOR HIGHWAY AND BRIDGE CONSTRUCTION, CURRENT EDITION.

## TYPICAL DETAIL - BID ITEM 035



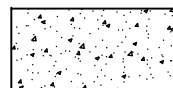
## STRIP SEAL JOINT - AT ABUTMENT



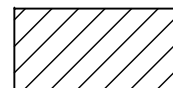
## STRIP SEAL JOINT - AT SLEEPER FOOTER

\* THICKNESS VARIES, UP TO 12"

\*\* IF BARS REQUIRE REPLACEMENT, REINFORCEMENT TO BE PAID UNDER BID ITEM No. 035



NEW CONCRETE



EXISTING CONCRETE

NO.	DESCRIPTION	DATE	BY
3			
2			
1			
REVISIONS			
NEW MEXICO DEPARTMENT OF TRANSPORTATION			
BRIDGE AND CULVERT REPAIR PRICE AGREEMENT			
BID ITEM 035			
STRIP SEAL JOINT FULL DEPTH REPLACEMENT AT ABUTMENTS			

## STRIP SEAL JOINT FULL DEPTH REPLACEMENT AT PIERS

### DESCRIPTION:

REMOVAL OF EXISTING UNSOUND CONCRETE, REBAR AND EXISTING JOINT. FORMING FOR PLACEMENT OF NEW CONCRETE, JOINT AND COMPONENTS. IT MAY BE NECESSARY TO CONSTRUCT A HAUNCH TO PROVIDE ADEQUATE COVER TO ACCOMMODATE NEW STEEL EXTRUSIONS. AN ALTERNATE JOINT SYSTEM MAY BE USED AS DIRECTED BY THE PROJECT MANAGER. NEW REINFORCEMENT SHALL BE PAID UNDER PAY ITEM No. 036.

### LIMITATIONS:

REPLACEMENT WORK TO BE DETERMINED AND AGREED TO BY THE DISTRICT AND THE CONTRACTOR.

### CONSTRUCTION PROCEDURE:

PREPARE SURFACE BY REMOVING ALL DETERIORATED CONCRETE, EXISTING JOINT MEMBERS, DIRT, OIL, GREASE AND OTHER BOND INHIBITING MATERIAL. REMOVAL OF UNSOUND CONCRETE TO BE FULL DEPTH OF THE DECK. THE EXISTING REBAR SHALL BE PRESERVED AND SANDBLASTED TO REMOVE ALL DELETERIOUS MATERIAL AND RESTORED TO ITS ORIGINAL SHAPE, ADD REBAR AS NEEDED. APPLY MATERIAL IN ACCORDANCE WITH MANUFACTURER'S RECOMMENDATIONS. APPLY FINISH TO MEET EXISTING DECK FINISH.

RAPID-SET-CONCRETE MAY BE USED AT THE DISCRETION OF THE PROJECT MANAGER.

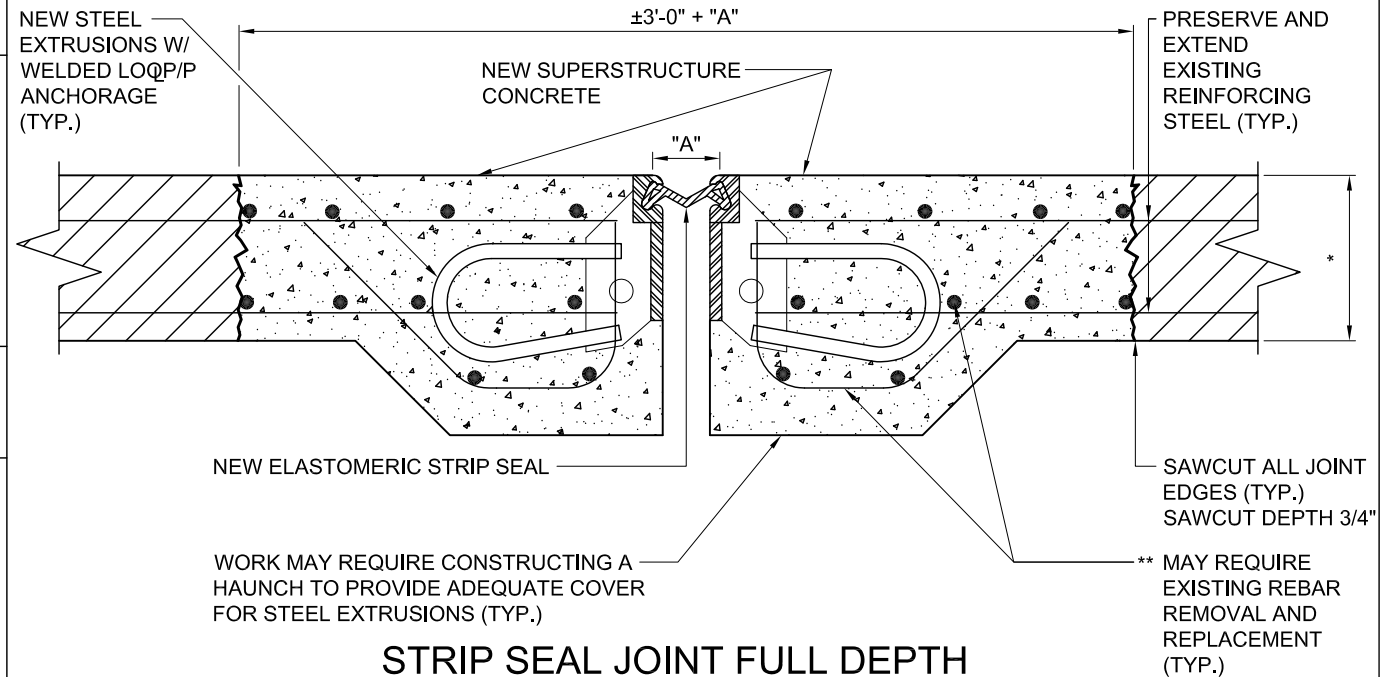
### RESOURCE REQUIREMENTS:

APPROVED EXPANSION JOINT MATERIAL; APPROVED NEW SUPERSTRUCTURE CONCRETE; FORMING PROCEDURES OR APPROVED EQUAL.

### REFERENCES:

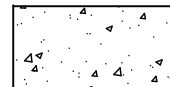
STANDARD DRAWINGS 562-01-1/3 THRU 3/3; SPECIAL PROVISION FOR SECTION 512, SECTION 512, SECTION 540 AND SECTION 562 OF THE NEW MEXICO DEPARTMENT OF TRANSPORTATION STANDARD SPECIFICATIONS FOR HIGHWAY AND BRIDGE CONSTRUCTION, CURRENT EDITION.

## TYPICAL DETAIL - BID ITEM 036



## STRIP SEAL JOINT FULL DEPTH REPLACEMENT AT PIERS

- \* THICKNESS VARIES, UP TO 10"± (A FEW SLAB DECK BRIDGES MAY BE UP TO 14"±)
- \*\* IF BARS REQUIRE REPLACEMENT, REINFORCEMENT TO BE PAID UNDER BID ITEM No. 036



NEW CONCRETE



EXISTING CONCRETE

C	3			
	2			
	1			
NO.	DESCRIPTION	DATE	BY	
REVISIONS				
NEW MEXICO DEPARTMENT OF TRANSPORTATION				
BRIDGE AND CULVERT REPAIR PRICE AGREEMENT				
BID ITEM 036 STRIP SEAL JOINT FULL DEPTH REPLACEMENT AT PIERS				
BCRPA-2				

## STRIP SEAL JOINT PARTIAL DEPTH REPLACEMENT

### DESCRIPTION:

REMOVAL OF EXISTING CONCRETE, REBAR, EXISTING JOINT, FORMING, PLACEMENT OF CONCRETE AND PLACEMENT OF NEW JOINT COMPONENTS. NEW REINFORCEMENT SHALL BE PAID UNDER PAY ITEM No. 037.

### LIMITATIONS:

REPLACEMENT WORK TO BE DETERMINED AND AGREED TO BY THE DISTRICT AND THE CONTRACTOR.

### CONSTRUCTION PROCEDURE:

PREPARE SURFACE BY REMOVING ALL DETERIORATED CONCRETE, EXISTING JOINT MEMBERS, DIRT, OIL, GREASE AND OTHER BOND INHIBITING MATERIAL. REMOVE CONCRETE TO THE DEPTH REQUIRED TO ACCOMMODATE THE NEW STEEL EXTRUSION. PRESERVE AND CLEAN EXISTING REBAR AND ADD REBAR AS NEEDED. INSTALL MATERIAL IN ACCORDANCE WITH MANUFACTURER'S RECOMMENDATIONS. APPLY FINISH TO MEET EXISTING DECK FINISH.

RAPID-SET-CONCRETE MAY BE USED AT THE DISCRETION OF THE PROJECT MANAGER.

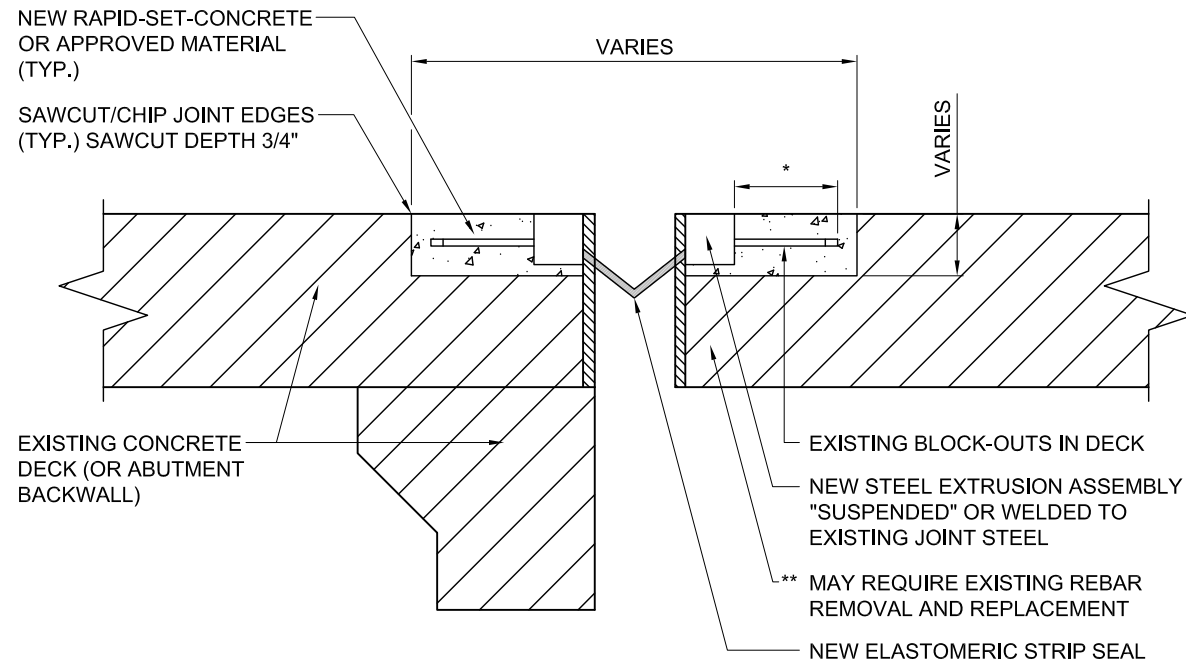
### RESOURCE REQUIREMENTS:

APPROVED EXPANSION JOINT MATERIAL; APPROVED NEW SUPERSTRUCTURE CONCRETE; FORMING AND PLACEMENT OR APPROVED EQUAL.

### REFERENCES:

STANDARD DRAWINGS 562-01-1/3 THRU 3/3; SPECIAL PROVISION FOR SECTION 512, SECTION 512, SECTION 533 AND SECTION 562 OF THE NEW MEXICO DEPARTMENT OF TRANSPORTATION STANDARD SPECIFICATIONS FOR HIGHWAY AND BRIDGE CONSTRUCTION, CURRENT EDITION.

## TYPICAL DETAIL - BID ITEM 037

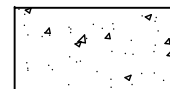


\* MINIMUM LENGTH =  $3\frac{1}{2}$ " TO A MAXIMUM LENGTH = 13"

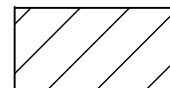
\*\* IF BAR REQUIRES REPLACEMENT, REINFORCEMENT TO BE PAID UNDER PAY ITEM No. 037

## STRIP SEAL JOINT PARTIAL DEPTH REPLACEMENT

EXISTING JOINT MEMBERS REMOVED  
AND REPLACED WITH NEW COMPONENTS



NEW CONCRETE



EXISTING CONCRETE

C	3			
	2			
	1			
NO.	DESCRIPTION	DATE	BY	
REVISIONS				
NEW MEXICO DEPARTMENT OF TRANSPORTATION				
BRIDGE AND CULVERT REPAIR PRICE AGREEMENT				
<p>BID ITEM 037 STRIP SEAL JOINT PARTIAL DEPTH REPLACEMENT</p>				

## JOINT SEALS

**DESCRIPTION:**  
REMOVAL OF EXISTING JOINT SEALS  
AND REPLACEMENT WITH NEW JOINT  
SEALS.

**LIMITATIONS:**  
JOINT WORK TO BE DETERMINED AND  
AGREED TO BY THE DISTRICT AND THE  
CONTRACTOR.

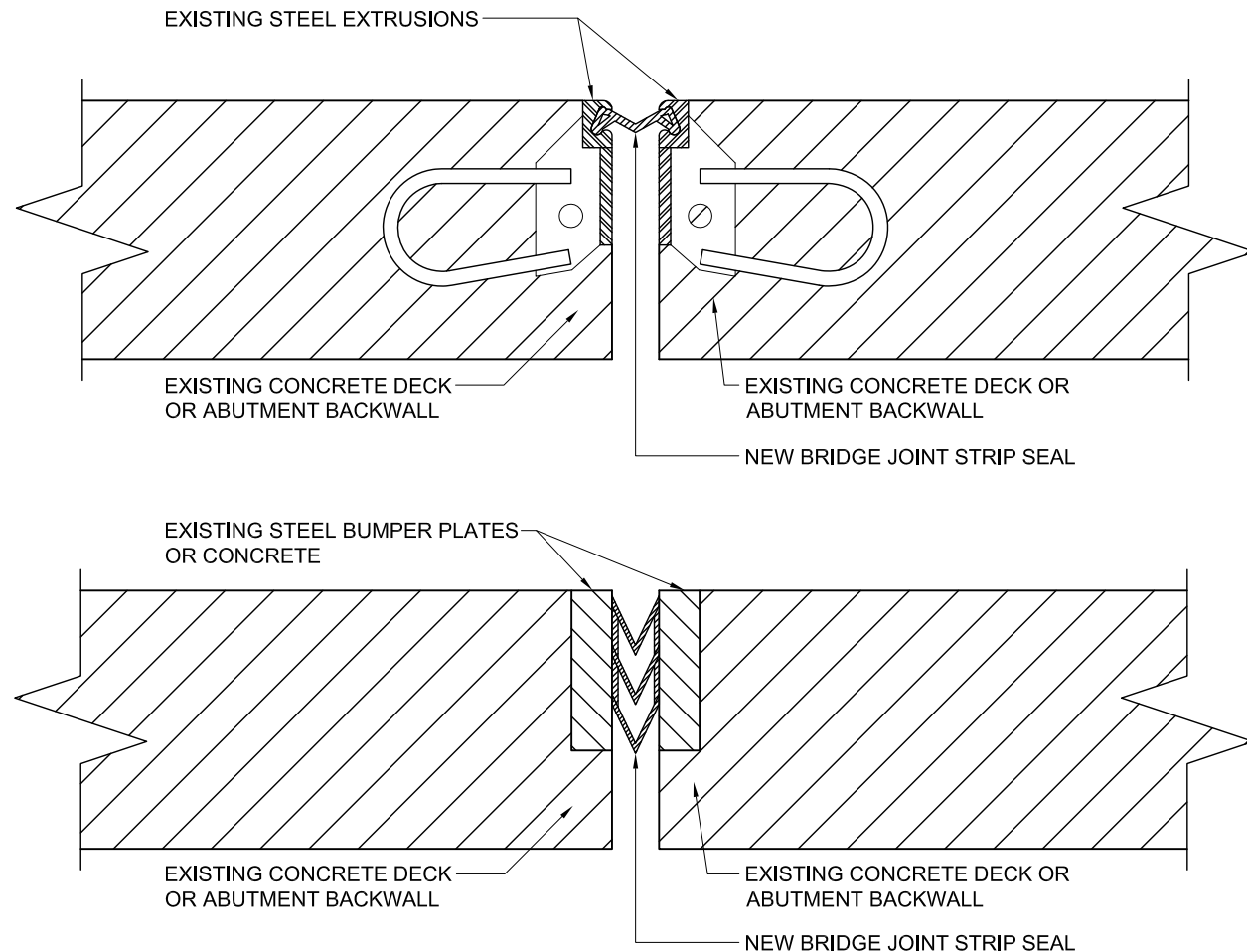
**CONSTRUCTION PROCEDURE:**  
PREPARE AND CLEAN STEEL SURFACE  
OR CONCRETE BY REMOVING DIRT,  
OIL, GREASE AND OTHER BOND  
INHIBITING MATERIALS TO ACCEPT  
NEW JOINT SEALS. THE EXISTING  
EXPOSED REBAR SHALL BE  
SANDBLASTED TO REMOVE ALL  
DELETERIOUS MATERIAL AND  
RESTORED TO ITS ORIGINAL SHAPE.  
APPLY MATERIAL IN ACCORDANCE  
WITH MANUFACTURER'S  
RECOMMENDATIONS.

RAPID-SET-CONCRETE MAY BE USED  
AT THE DISCRETION OF THE DISTRICT.

**RESOURCE REQUIREMENTS:**  
APPROVED MATERIALS FOR JOINT  
REPAIR AND PLACEMENT PROCEDURE.

**REFERENCES:**  
STANDARD DRAWINGS 562-01-1/3 THRU  
3/3; SECTION 561 AND SECTION 562 OF  
THE NEW MEXICO DEPARTMENT OF  
TRANSPORTATION STANDARD  
SPECIFICATIONS FOR HIGHWAY AND  
BRIDGE CONSTRUCTION, CURRENT  
EDITION.

## TYPICAL DETAIL - BID ITEM 038



## JOINT SEALS

VARIOUS JOINT SEAL COMPONENTS  
INSTALLED AT EXISTING DECK JOINT



EXISTING CONCRETE

3			
2			
1			
NO.	DESCRIPTION	DATE	BY
REVISIONS			
NEW MEXICO DEPARTMENT OF TRANSPORTATION			
BRIDGE AND CULVERT REPAIR PRICE AGREEMENT			
BID ITEM 038 JOINT SEALS			

## PREMOLDED JOINT SEAL

**DESCRIPTION:**  
REMOVAL OF EXISTING JOINT AND INSTALLATION  
OF PREFORMED JOINT MATERIAL.

**LIMITATIONS:**  
JOINT WORK TO BE DETERMINED AND AGREED  
TO BY THE DISTRICT AND THE CONTRACTOR.

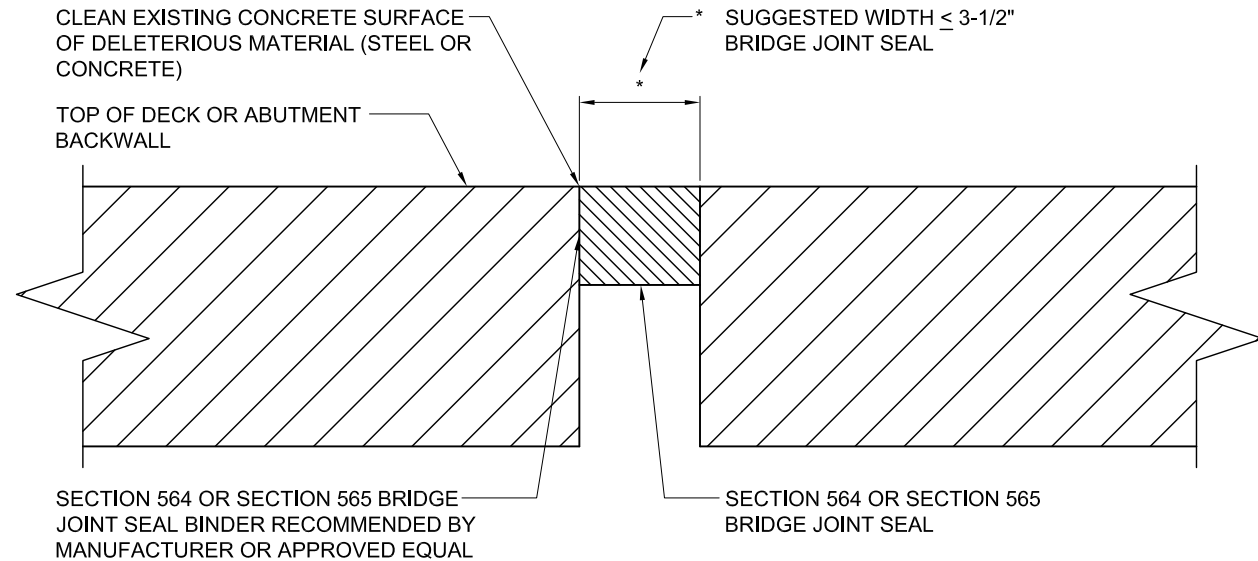
**CONSTRUCTION PROCEDURE:**  
PREPARE SURFACE BY REMOVING ALL DIRT, OIL,  
GREASE AND OTHER BOND INHIBITING  
MATERIALS. INSTALL NEW MATERIALS IN  
ACCORDANCE WITH MANUFACTURER'S  
RECOMMENDATIONS. SAWCUT OR CHIPPING OF  
EXISTING CONCRETE MAY BE REQUIRED.

**REQUIRED CERTIFICATION OF APPROVED  
CONTRACTOR FOR THE INSTALLATION OF  
PREFORMED CLOSED CELL FOAM BRIDGE JOINT  
STRIP SEALS OR PREFORMED SILICONE-COATED  
FOAM JOINT SYSTEM AND LABOR AND A FIVE (5)  
YEAR WARRANTY ON INSTALLED PREFORMED  
CLOSED CELL FOAM BRIDGE JOINT STRIP SEALS  
OR PREFORMED SILICONE-COATED FOAM JOINT  
SYSTEM AND LABOR SHALL BE FURNISHED IN  
WRITING TO THE DISTRICT ENGINEER OR  
DISTRICT ENGINEER'S DESIGNEE.**

**RESOURCE REQUIREMENTS:**  
APPROVED EXPANSION JOINT MATERIAL AND  
APPROVED PLACEMENT PROCEDURES.

**REFERENCES:**  
STANDARD DRAWING 564-01-1/1; SPECIAL  
PROVISION FOR SECTION 564, SECTION 564 AND  
SPECIAL PROVISION FOR SECTION 565 OF THE  
NEW MEXICO DEPARTMENT OF  
TRANSPORTATION STANDARD SPECIFICATIONS  
FOR HIGHWAY AND BRIDGE CONSTRUCTION,  
CURRENT EDITION.

## TYPICAL DETAIL - BID ITEM 039



\* WIDTH VARIES WITH PRODUCT SELECTED. REFER  
TO MANUFACTURER'S RECOMMENDATIONS.

## PREMOLDED JOINT SEAL

REMOVAL OF EXISTING JOINT AND  
INSTALLATION OF NEW JOINT MATERIAL



EXISTING CONCRETE

C	3			
	2			
	1			
NO.	DESCRIPTION	DATE	BY	
REVISIONS				
NEW MEXICO DEPARTMENT OF TRANSPORTATION				
BRIDGE AND CULVERT REPAIR PRICE AGREEMENT				
BID ITEM 039 PREMOLDED JOINT SEAL				

## PREMOLDED JOINT SEAL WITH CONCRETE REMOVAL

### DESCRIPTION:

REMOVAL OF EXISTING JOINT AND CONCRETE, INSTALLATION OF PREMOLDED JOINT SEAL, RAPID SET CONCRETE OR APPROVED MATERIAL AND NEW JOINT COMPONENTS.

### LIMITATIONS:

JOINT WORK TO BE DETERMINED AND AGREED TO BY THE DISTRICT AND THE CONTRACTOR.

### CONSTRUCTION PROCEDURE:

PREPARE SURFACE BY REMOVING EXISTING JOINT, SAW CUTTING AND CHIPPING OF CONCRETE. REMOVE DIRT, OIL, GREASE AND OTHER BOND INHIBITING MATERIAL. THE EXISTING EXPOSED REBAR SHALL BE SANDBLASTED TO REMOVE ALL DELETERIOUS MATERIAL AND RESTORED TO ITS ORIGINAL SHAPE. APPLY MATERIALS IN ACCORDANCE WITH MANUFACTURER'S RECOMMENDATIONS.

SAW CUTTING (3/4") AND CHIPPING OF EXISTING CONCRETE TO A MINIMUM DEPTH OF 2-1/2" IS REQUIRED.

RAPID-SET-CONCRETE MAY BE USED AT THE DISCRETION OF THE PROJECT MANAGER.

REQUIRED CERTIFICATION OF APPROVED CONTRACTOR FOR THE INSTALLATION OF PREFORMED CLOSED CELL FOAM BRIDGE JOINT SEALS OR PREFORMED SILICONE-COATED FOAM JOINT SYSTEM AND LABOR AND A FIVE (5) YEAR WARRANTY ON INSTALLED PREFORMED CLOSED CELL FOAM BRIDGE JOINT SEALS OR PREFORMED SILICONE-COATED FOAM JOINT SYSTEM AND LABOR SHALL BE FURNISHED IN WRITING TO THE DISTRICT ENGINEER OR DISTRICT ENGINEER'S DESIGNEE.

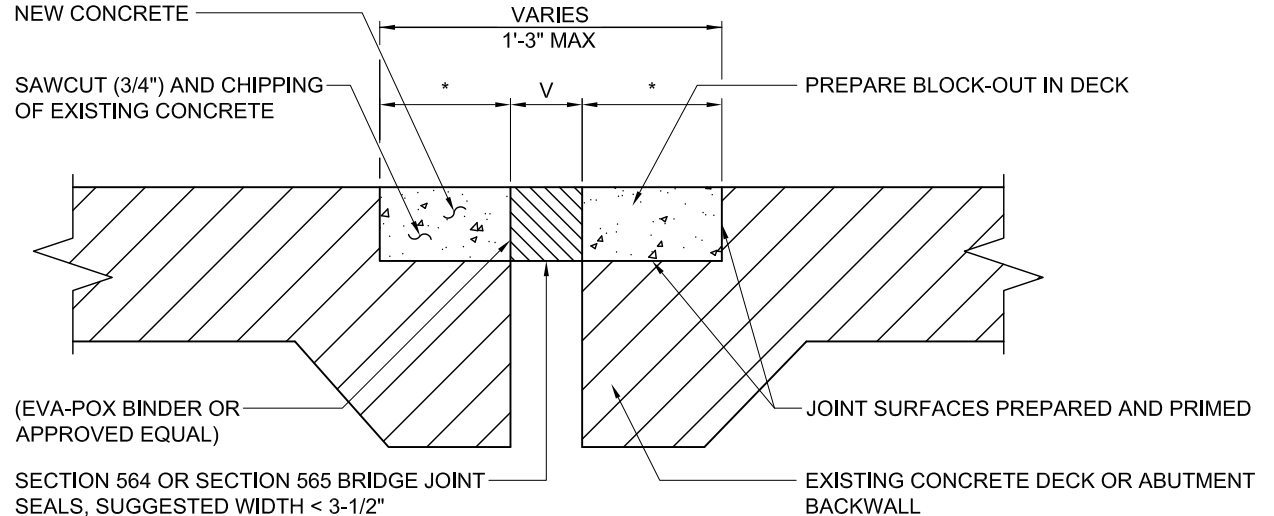
### RESOURCE REQUIREMENTS:

APPROVED MATERIALS FOR JOINT REPAIR AND PLACEMENT PROCEDURE.

### REFERENCES:

STANDARD DRAWING 564-01-1/1; SPECIAL PROVISION FOR SECTION 512, SECTION 512, SECTION 533, SECTION 564 AND SPECIAL PROVISION FOR SECTION 565 OF THE NEW MEXICO DEPARTMENT OF TRANSPORTATION STANDARD SPECIFICATIONS FOR HIGHWAY AND BRIDGE CONSTRUCTION, CURRENT EDITION.

## TYPICAL DETAIL - BID ITEM 040



## PREMOLDED JOINT SEAL WITH CONCRETE REMOVAL

INSTALLATION OF PREMOLDED JOINT SEAL, RAPID SET CONCRETE AND JOINT COMPONENTS



NEW CONCRETE



EXISTING CONCRETE

	3			
	2			
	1			
	NO.	DESCRIPTION	DATE	BY
REVISIONS				
NEW MEXICO DEPARTMENT OF TRANSPORTATION				
BRIDGE AND CULVERT REPAIR PRICE AGREEMENT				
<p>BID ITEM 040 PREMOLDED JOINT SEAL WITH CONCRETE REMOVAL</p>				
BCRPA-6				

## SUBSTRUCTURE REPLACEMENT

### DESCRIPTION:

REMOVAL OF EXISTING UNSOUND CONCRETE, REBAR, ETC. INCLUDING THE FORMING AND PLACEMENT OF NEW CONCRETE FOR PIER CAPS AND PIER COLUMNS. (REPLACEMENT OF REBAR WILL BE PAID UNDER BID ITEM No. 046).

### LIMITATIONS:

AREAS OF WORK TO BE DETERMINED AND AGREED TO BY THE DISTRICT AND THE CONTRACTOR.

### CONSTRUCTION PROCEDURE:

PREPARE AREA BY REMOVING ALL DETERIORATED CONCRETE, DIRT, OIL, GREASE AND OTHER BOND INHIBITING MATERIAL. THE EXISTING EXPOSED REBAR SHALL BE SANDBLASTED TO REMOVE ALL DELETERIOUS MATERIAL, RESTORED TO ITS ORIGINAL SHAPE AND REPLACED OR EXTENDED AS NEEDED TO FACILITATE INSTALLATION. IN THE CASE OF REPLACING A PIER CAP, THE EXISTING PILES AND/OR EXISTING REBAR SHALL BE RESTORED TO THEIR ORIGINAL SHAPE FOR INCORPORATION INTO THE NEW SUBSTRUCTURE CONCRETE. APPLY MATERIALS IN ACCORDANCE WITH MANUFACTURER'S RECOMMENDATIONS. APPLY FINISH TO MEET EXISTING DECK FINISH AND STRUCTURE FINISH.

RAPID-SET-CONCRETE MAY BE USED AT THE DISCRETION OF THE PROJECT MANAGER.

### RESOURCE REQUIREMENTS:

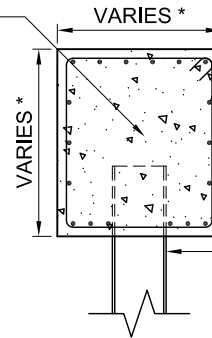
APPROVED PATCHING MATERIALS, REBAR, ETC. AND PLACEMENT PROCEDURE.

### REFERENCES:

SECTION 510, SPECIAL PROVISION FOR SECTION 511, SECTION 533 AND SECTION 540 OF THE NEW MEXICO DEPARTMENT OF TRANSPORTATION STANDARD SPECIFICATIONS FOR HIGHWAY AND BRIDGE CONSTRUCTION, CURRENT EDITION.

## TYPICAL DETAIL - BID ITEM 042

NEW PIER CAP CONSTRUCTED OF NEW SUBSTRUCTURE CONCRETE.



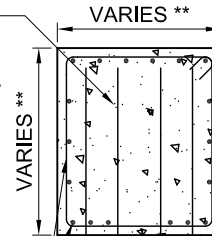
\* NEW REINFORCEMENT TO BE PAID UNDER BID ITEM No. X59 - REINFORCING BARS.

EXISTING PILE (OR CONCRETE COLUMN) TO BE PRESERVED, CLEANED, STRAIGHTENED AND INCORPORATED INTO THE NEW SUBSTRUCTURE CONCRETE.

## SUBSTRUCTURE REPLACEMENT - PIER CAP REPLACEMENT

\* THE DIMENSIONS OF THE NEW PIER CAP SHALL MATCH THE EXISTING CAP. REFER TO THE AS-BUILTS FOR EXISTING DIMENSIONS AND EXISTING REINFORCEMENT.

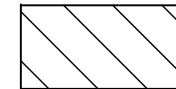
EXISTING PIER CAP. REMOVE EXISTING PIER CAP OVER COLUMNS AND REPAIR AS NEEDED. CONSTRUCT WITH NEW SUBSTRUCTURE CONCRETE.



\*\* NEW REINFORCEMENT TO BE PAID UNDER BID ITEM No. X59 - REINFORCING BARS.



NEW CONCRETE

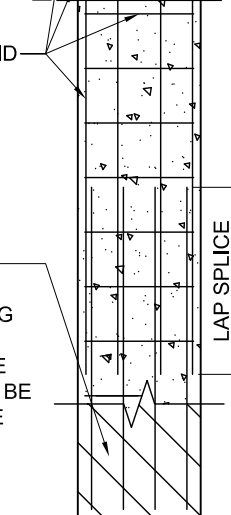


EXISTING CONCRETE

### NOTE:

WHEN CALLED FOR, A NEW PIER CAP AND/OR NEW PIER COLUMN(S) MUST BE DESIGNED BY A PROFESSIONAL ENGINEER LICENSED IN THE STATE OF NEW MEXICO. A MINIMUM OF 60 CALENDAR DAY ADVANCED NOTICE SHALL BE GIVEN TO THE NMDOT BRIDGE BUREAU FOR DESIGN.

EXISTING CONCRETE COLUMN. PRESERVE, CLEAN, STRAIGHTEN AND INCORPORATE THE EXISTING VERTICAL BARS INTO THE NEW SUBSTRUCTURE CONCRETE. THE EXISTING REINFORCEMENT WILL BE CUT AS NECESSARY TO PROVIDE AN ADEQUATE LAP SPLICE WITH THE NEW VERTICAL BARS.



## SUBSTRUCTURE REPLACEMENT - PIER COLUMN REPLACEMENT

\*\* THE DIMENSIONS OF THE NEW PIER CAP AND PIER COLUMNS SHALL MATCH THE EXISTING PIER CAPS AND PIER COLUMNS. REFER TO THE AS-BUILTS FOR EXISTING DIMENSIONS AND EXISTING REINFORCEMENT.

3			
2			
1			
NO.	DESCRIPTION	DATE	BY
REVISIONS			
NEW MEXICO DEPARTMENT OF TRANSPORTATION			
BRIDGE AND CULVERT REPAIR PRICE AGREEMENT			
BID ITEM 042 SUBSTRUCTURE REPLACEMENT			
BCRPA-7			

# BACKWALL REPLACEMENT

**DESCRIPTION:**  
REMOVAL OF EXISTING UNSOUND CONCRETE AND REINFORCEMENT (IF REQUIRED) AND REPLACEMENT WITH RAPID-SET-CONCRETE OR APPROVED MATERIAL. NEW REINFORCEMENT SHALL BE PAID UNDER PAY ITEM No. 043.

**LIMITATIONS:**  
REPLACEMENT WORK TO BE DETERMINED AND AGREED TO BY THE DISTRICT AND THE CONTRACTOR.

**CONSTRUCTION PROCEDURE:**  
PREPARE SURFACE BY REMOVING ALL DETERIORATED CONCRETE, EXISTING JOINT MEMBERS, DIRT, OIL, GREASE AND OTHER BOND INHIBITING MATERIALS. THE EXISTING REBAR SHALL BE PRESERVED AND SANDBLASTED TO REMOVE ALL DELETERIOUS MATERIAL AND RESTORED TO ITS ORIGINAL SHAPE. ADD REBAR AS NEEDED. APPLY MATERIALS IN ACCORDANCE WITH MANUFACTURER'S RECOMMENDATIONS.

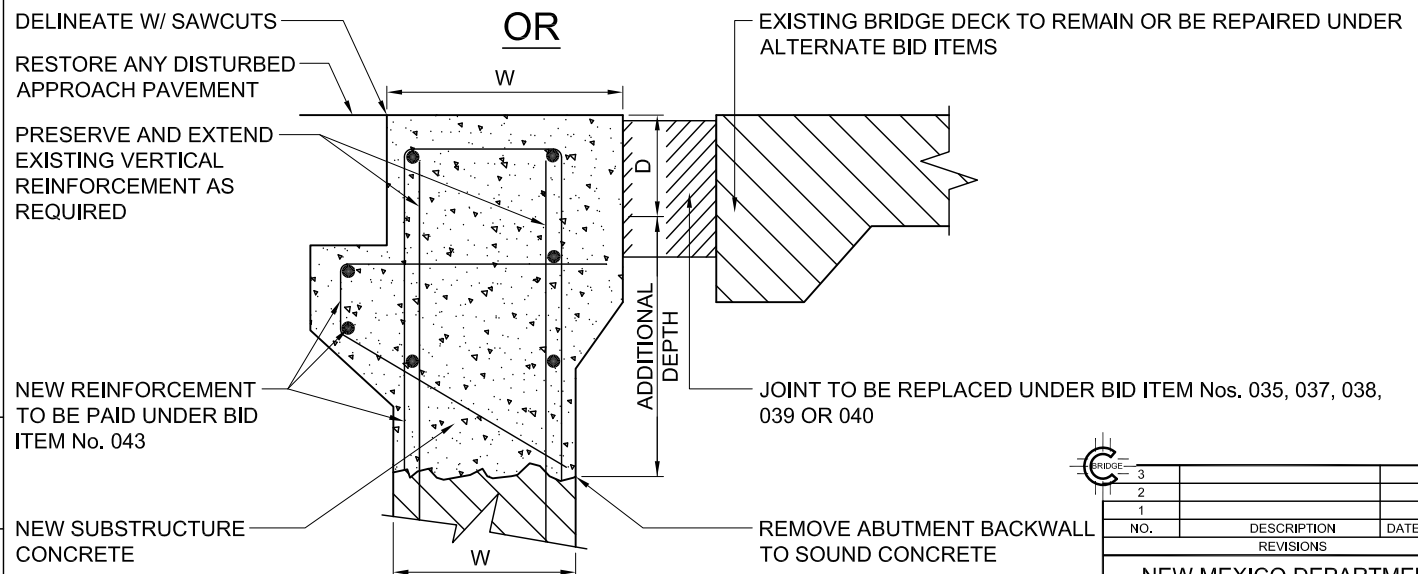
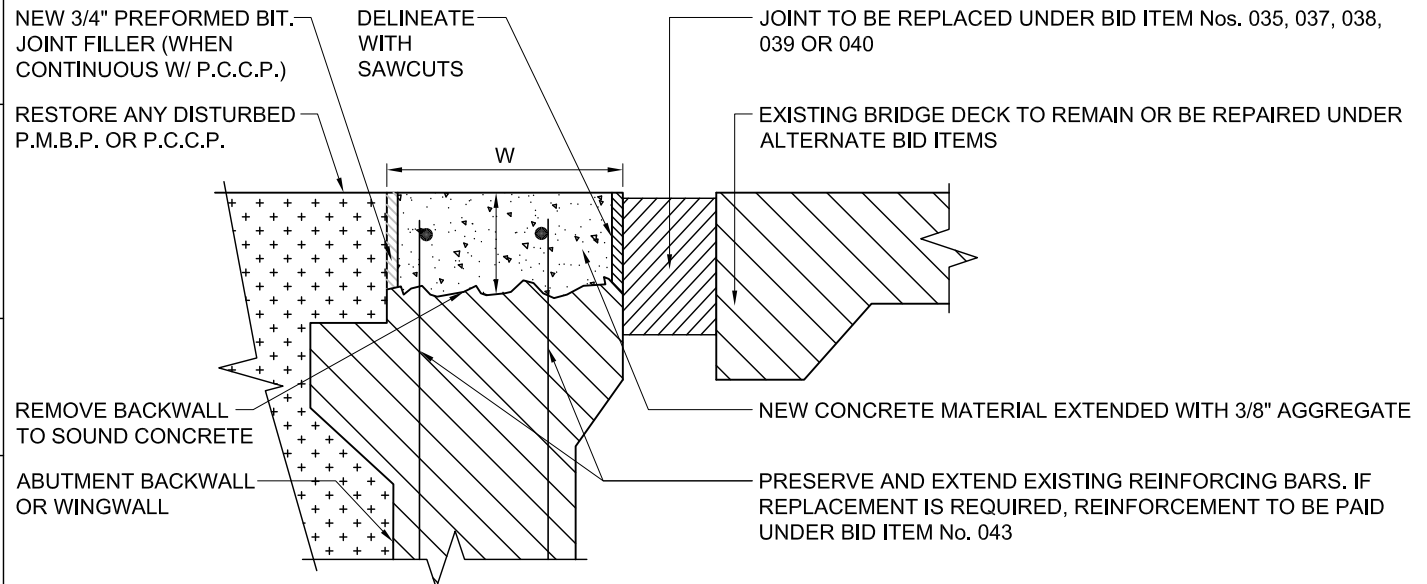
RAPID-SET-CONCRETE MAY BE USED AT THE DISCRETION OF THE PROJECT MANAGER.

UNIT BID PRICE IS FOR THE FIRST 10". THE CONTRACTOR WILL BE PAID 2% EXTRA FOR EACH ADDITIONAL INCH OF DEPTH BEYOND 10" DIRECTED TO BE REMOVED.

**RESOURCE REQUIREMENTS:**  
NEW SUPERSTRUCTURES CONCRETE, FORMING AND PLACEMENT PROCEDURES.

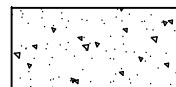
**REFERENCES:**  
SECTION 510, SPECIAL PROVISION FOR SECTION 511, SECTION 533 AND SECTION 540 OF THE NEW MEXICO DEPARTMENT OF TRANSPORTATION STANDARD SPECIFICATIONS FOR HIGHWAY AND BRIDGE CONSTRUCTION, CURRENT EDITION.

## TYPICAL DETAIL - BID ITEM 043



## BACKWALL REPLACEMENT

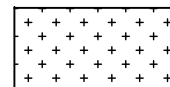
W-WIDTH VARIES: 1'-0" MIN. ± TO 1'-9" MAX. ±  
D-DEPTH VARIES: UP TO MAXIMUM DEPTH OF 10"



NEW  
CONCRETE



EXISTING  
CONCRETE



EXISTING P.M.B.P.  
OR P.C.C.P.

3			
2			
1			
NO.	DESCRIPTION	DATE	BY
REVISIONS			
NEW MEXICO DEPARTMENT OF TRANSPORTATION			
BRIDGE AND CULVERT REPAIR PRICE AGREEMENT			
BID ITEM 043 BACKWALL REPLACEMENT			