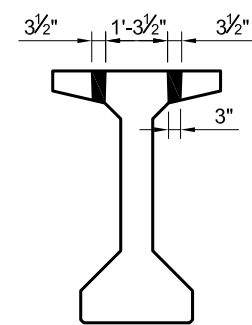
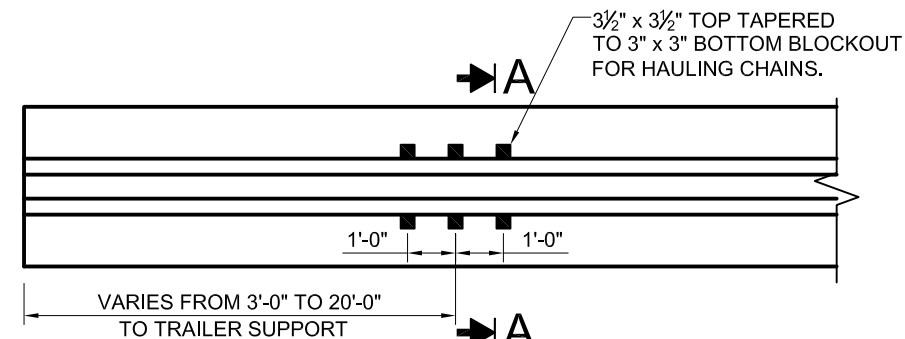


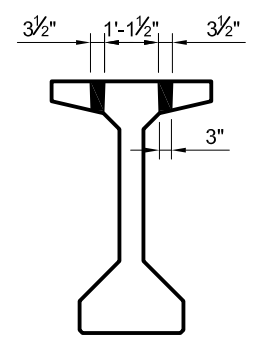
PLAN VIEW
TYPE 63 GIRDER



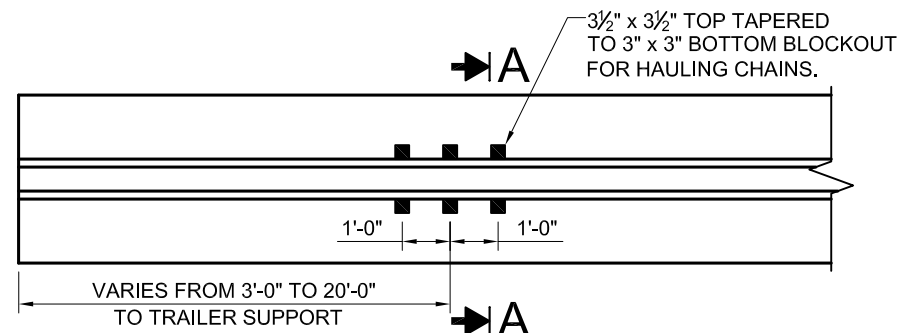
SECTION A-A



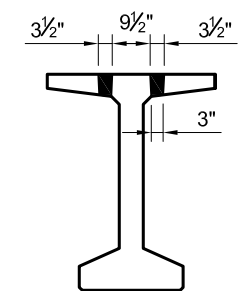
PLAN VIEW
TYPE 63 MODIFIED GIRDER



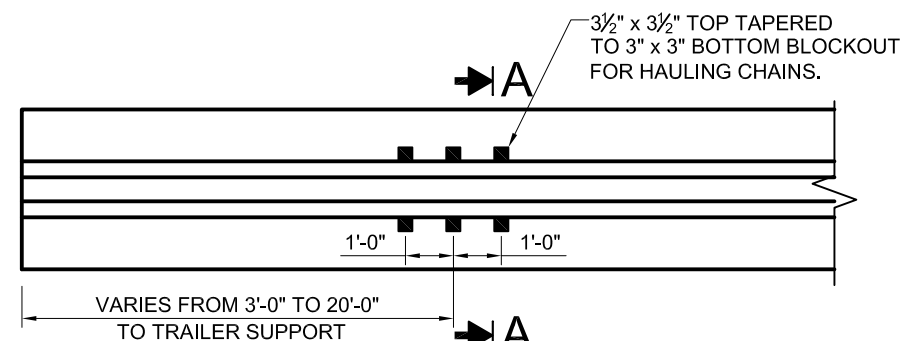
SECTION A-A



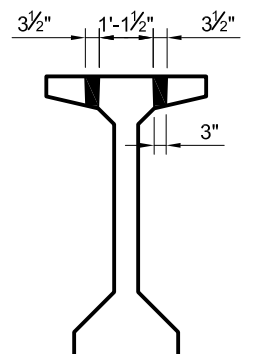
PLAN VIEW
BT-54 GIRDER



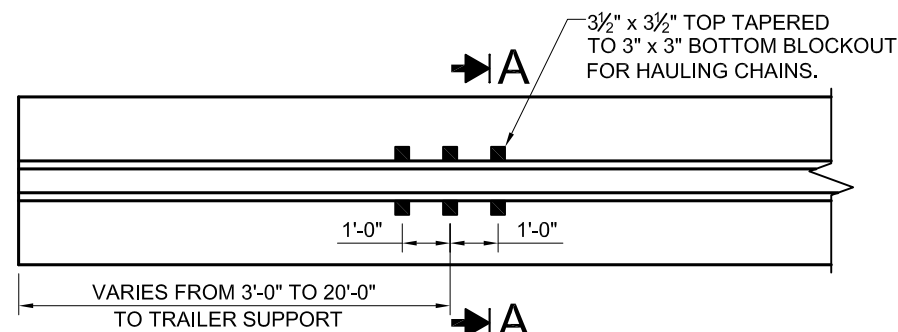
SECTION A-A



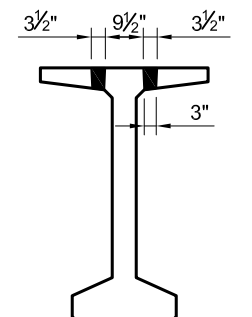
PLAN VIEW
TYPE 72 MODIFIED GIRDER



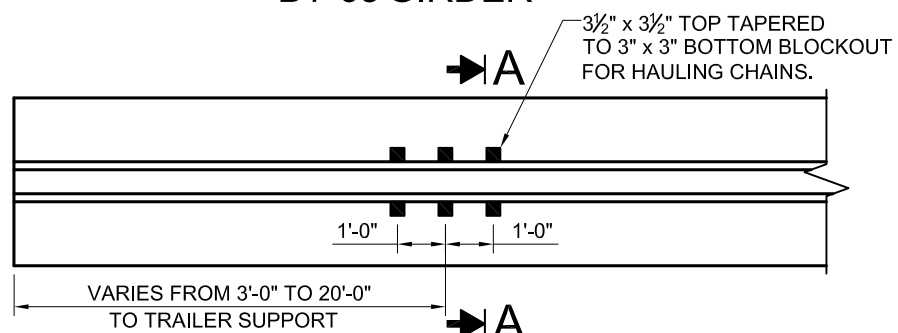
SECTION A-A



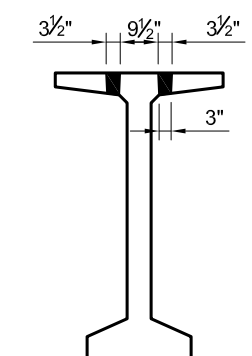
PLAN VIEW
BT-63 GIRDER



SECTION A-A



PLAN VIEW
BT-72 GIRDER



SECTION A-A

NOTES:

1. LOCATION OF BLOCKOUTS TO BE DETERMINED BY FABRICATOR IN CONSULTATION WITH GIRDER TRANSPORTER AND SHOWN ON THE SHOP DRAWINGS FOR REVIEW BY THE BRIDGE BUREAU AND NMDOT PRECAST INSPECTORS.
2. PLACEMENT OF BLOCKOUTS SHALL NOT RESULT IN EXPOSURE OF STEEL REINFORCING BARS. A MINIMUM 2" CLEAR COVER WILL BE REQUIRED AND SHOWN ON THE SHOP DRAWINGS.
3. BLOCKOUTS WILL BE FILLED WITH DECK CONCRETE MATERIAL. CONCRETE MATERIAL FILLING THE BLOCKOUTS WILL BE INCIDENTAL TO THE COST OF THE PRESTRESSED GIRDERS AND NO ADDITIONAL PAYMENT WILL BE MADE THEREFOR.
4. BLOCKOUTS THROUGH THE WEBS OF THE GIRDERS WILL NOT BE ALLOWED.

NOTE TO DESIGNERS:
SELECT THE PLAN VIEW AND SECTION A-A FOR YOUR GIRDER TYPE AND ADD TO THE BRIDGE PLANS. ALSO ADD THE NOTES LISTED ON THIS SHEET TO THE BRIDGE PLANS.



REVISIONS			
NO.	DESCRIPTION	DATE	BY

NEW MEXICO DEPARTMENT OF
TRANSPORTATION

ROUTE OVER
FEATURE INTERSECTED

PERMISSIBLE DETAIL
TOP FLANGE BLOCK-OUT
FOR HAULING CHAINS