

# New Mexico Roadway Bicycle Guideline Map

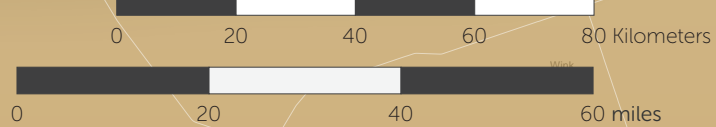


## Notice of Disclaimer

This map is published by the New Mexico Department of Transportation (NMDOT) as an aid to bicyclists, and is not intended to be a substitute for a person's use of reasonable care. The State of New Mexico and the counties and cities of the State do not warrant that any of the roadways or bikeways within the State, whether or not they are shown on this map, are safe or fit for bicycle travel. The unpredictable change of traffic, road and weather conditions require bicyclists to consistently review all routes for suitability. Therefore, bicyclists assume all risks and responsibilities for their own safety when bicycling on the roadways and bikeways within the State.

Moreover, bicyclists should be familiar with State and local laws and ordinances concerning bicycle use on roadways and bikeways. Bicyclists are reminded that a bicycle is a legal vehicle with the same rights and responsibilities as a motor vehicle. Bicyclists must follow all traffic rules, ride as near to the right side of the roadway as practicable, exercise due care when passing a standing vehicle or one preceding in the same direction, and shall not ride more than two abreast, except where permitted. For more information on State laws concerning bicycle use see Sections 66-3-701 through 66-3-707 NMSA 1978 on the reverse side of this map.

This map is provided as a public service. The information herein is based on NMDOT's most recent information. Every effort has been made to ensure the accuracy of the data presented on this map. Due to on-going construction and maintenance projects throughout the State, changes may occur to roadways and bikeways.



## Legend

### Estimated Usable Shoulder Width

- 0 - 2 Feet
- 2 - 4 Feet
- > 4 Feet

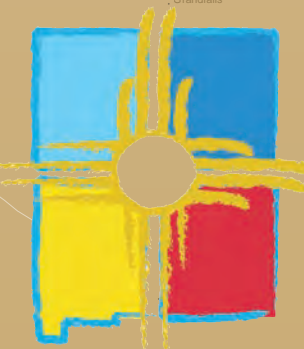
### Average Annual Daily Traffic\*

- 280 Average Daily Truck Traffic
- 650 Average Daily Total Traffic

\*Based on 2013 data

- Steep Grade (>2.5%)
- Rumble Strips
- Prohibited Interstate Travel
- County
- State
- International
- Continental Divide
- No Data Available
- River

- Rest Area
- Campground
- Port of Entry
- Bike Shop
- Mountain Peak
- Park
- Interstate Highways
- US Highways
- State Highways
- Other Roads
- Lakes
- Parks
- Wilderness/Forest
- Native Reservation
- Military Reservation



(6/15/2015)

## Welcome

The New Mexico Department of Transportation's State Bicycle Guideline Map is provided to assist you in choosing your preferred routes when bicycling through New Mexico. We estimated our usable shoulder width by adjusting shoulder data depending on the presence of rumble strips and guardrails or other adjacent barriers. The traffic volumes are derived from averages, and you may experience more or less traffic than displayed on the map.

When bicycling throughout New Mexico, please make sure to plan accordingly. Call ahead to communities and potential service providers to verify that your destination has the services you need or want. Some areas of the state are quite remote and uninhabited. While these are some of the very qualities that draw visitors to New Mexico, please note that some communities displayed on our map may not have the services you expect. Further, all campground, bicycle shop and rest area information contained on this map is subject to change.

We hope you enjoy your bicycling trips throughout the Land of Enchantment! Whether you're climbing mountain passes or enjoying the long open road, our wonderful climate, incomparable vistas, and unique history are sure to provide you with a memorable experience.

For Bicycle Maps of the following urban areas, please use the contact information and links below.

**Albuquerque**  
Phone: 505.768.2680  
Web: [www.cabq.gov/parksandrecreation/recreation/bike/bike-map](http://www.cabq.gov/parksandrecreation/recreation/bike/bike-map)

**El Paso**  
Phone: 919.212.0118  
Web: [gis.elpasotexas.gov/bikelanes/index.html](http://gis.elpasotexas.gov/bikelanes/index.html)

**Farmington**  
Phone: 505.599.1197  
Web: [www.fmtn.org/DocumentCenter/View/748](http://www.fmtn.org/DocumentCenter/View/748)

**Las Cruces**  
Phone: 575.528.3043  
Web: <http://tinyurl.com/o6snjax>

**Santa Fe**  
Phone: 505.955.6706  
Web: <http://santafempo.org/bicycle-master-plan/>

## Bicycle Statutes

### 32A-24-3. HELMET USE REQUIREMENTS; CIVIL PENALTY.

It is unlawful for a parent or legal guardian of a minor to knowingly permit that minor to operate or be a passenger on a bicycle, skates, scooter or skateboard unless that minor wears a well-fitted protective bicycle helmet, fastened securely upon the head with the straps of the helmet.

### 66-3-701. BICYCLES; EFFECT OF REGULATIONS.

- It is a misdemeanor for any person to do any act forbidden, or fail to perform any act required by Sections 66-3-701 through 66-3-707 NMSA 1978.
- The parent of any child and the guardian of any ward shall not authorize or permit any such child or ward to violate any of the provisions of the Motor Vehicle Code [66-1-1 NMSA 1978].
- These regulations applicable to bicycles shall apply whenever a bicycle is operated upon any highway or upon any path set aside for the exclusive use of bicycles subject to those exceptions stated herein.

### 66-3-702. TRAFFIC LAWS APPLY TO PERSONS RIDING BICYCLES.

Every person riding a bicycle upon a roadway shall be granted all of the rights and shall be subject to all of the duties applicable to the driver of a vehicle, except as to the special regulations within Sections 66-3-701 through 66-3-707 NMSA 1978.

### 66-3-703. RIDING ON BICYCLES.

- A person propelling a bicycle shall not ride other than upon or astride a permanent and regular seat attached thereto.
- No bicycle shall be used to carry more persons at one time than the number for which it is designed and equipped.

### 66-3-704. CLINGING TO VEHICLES.

No person riding upon any bicycle, coaster, roller skates, sled or toy vehicle shall attach the same or himself to any vehicle upon a roadway.

### 66-3-705. RIDING ON ROADWAYS AND BICYCLE PATHS.

- Every person operating a bicycle upon a roadway shall ride as near to the right side of the roadway as practicable, exercising due care when passing a standing vehicle or one proceeding in the same direction.
- Persons riding bicycles upon a roadway shall not ride more than two abreast except on paths or parts of roadways set aside for the exclusive use of bicycles.
- Notwithstanding any provision of this section, no bicycle shall be operated on any roadway in a manner that would create a public safety hazard.

### 66-3-706. CARRYING ARTICLES.

No person operating a bicycle shall carry any package, bundle or article which prevents the driver from keeping at least one hand upon the handlebar.

### 66-3-707. LAMPS AND OTHER EQUIPMENT ON BICYCLES.

- Every bicycle when used at nighttime shall be equipped with a lamp on the front which shall emit a white light visible from a distance of at least five hundred feet to the front and with a red reflector on the rear of a type approved by the division which shall be visible from all distances from fifty feet to three hundred feet to the rear when directly in front of lawful upper beams of head lamps on a motor vehicle. A lamp emitting a red light visible from a distance of five hundred feet to the rear may be used in addition to the red reflector.
- No person shall operate a bicycle unless it is equipped with a bell or other device capable of giving a signal audible for a distance of at least one hundred feet, except that a bicycle shall not be equipped with, nor shall any person use upon a bicycle any siren or whistle.
- Every bicycle shall be equipped with a brake which will enable the operator to make the brake wheels skid on dry, level, clean pavement.



## Etiquette on Tribal and Pueblo Lands

Please follow these rules of etiquette when visiting Pueblos:

Call ahead to confirm event dates, as well as access to tribal lands. There are times when tribal leaders need to restrict access because of private ceremonies and other reasons.

Some Pueblos may charge an entry fee. Camping and fishing fees are charged where such facilities are available. Call ahead to find out if there are fees associated with visiting.

Most Pueblos require a permit to photograph, sketch or paint on location. Some Pueblos prohibit photography at all times. Please check with the Tribal Office for the permitting process before entering the Pueblo. Once a permit is obtained, always ask for permission before taking a photograph of a tribal member. **REMEMBER: cameras and film can be confiscated.**

The carrying or use of alcohol and drugs on Pueblos is strictly prohibited.

Tribes value traditions, customs and religion. Tribal dances are religious ceremonies, not public performances.

Silence is mandatory during all dances and Pueblo ceremonies.

Pueblo villages, including Kivas, ceremonial rooms, and cemeteries are sacred places and restricted for use by Pueblo members only.

Many of the structures are hundreds of years old. Do not scale walls or climb on top of buildings.

Nature is sacred on the Pueblos. Littering is strictly prohibited.

On feast days and other public observances, enter a Pueblo home as you would any other - by invitation only.

Observe all signage indicating **OFF LIMITS** while visiting a Pueblo.

Refrain from bringing a cell phone onto Pueblos. Tribal officials could confiscate cell phones if they feel they might be used for photography or recording. Also, the ring tones as well as personal conversations can easily disrupt other visitors' experiences, as well as daily tribal life.

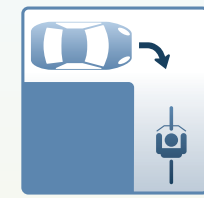
Do not remove artifacts, pottery shards or other tempting items.

Excerpted from "Etiquette" on Indian Pueblo Cultural Center website (2015).

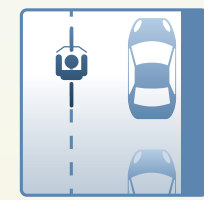
Please visit the Indian Pueblo Cultural Center's website for: Complete list of Pueblo rules of etiquette: [indianpueblo.org/19pueblos/etiquette.html](http://indianpueblo.org/19pueblos/etiquette.html)

Tribal contact information: [www.indianpueblo.org/19pueblos/index.html](http://www.indianpueblo.org/19pueblos/index.html)

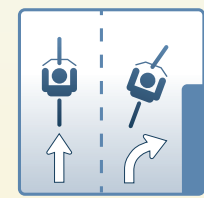
## Tips for Smart Cycling



**NEVER RIDE AGAINST TRAFFIC**  
It is extremely dangerous and against the law to ride on the wrong side of the roadway. It is also illegal to ride the wrong way on a one-way street.



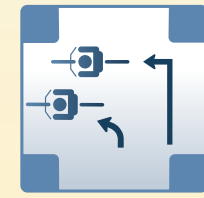
**RIDE DEFENSIVELY**  
When possible, ride in a straight line, to the right of traffic. For your own safety be as predictable as you can.



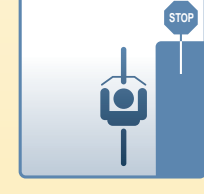
**FOLLOW LANE MARKINGS**  
Don't turn left from the right lane. Don't go straight in a lane marked right-turn-only.



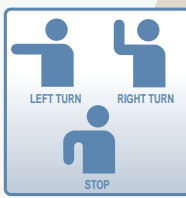
**PASS ON THE RIGHT WITH CARE**  
Motorists may not look for or see a bicycle passing on the right. They also may not signal their turns.



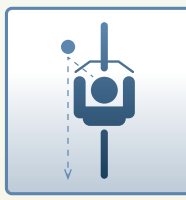
**CHOOSE THE BEST WAY TO TURN LEFT**  
There are two ways to make a left turn -- (1) Like an auto: signal, move into the left turn lane and turn left with the traffic, and (2) like a pedestrian: ride straight to the far side crosswalk and walk your bike across the street.



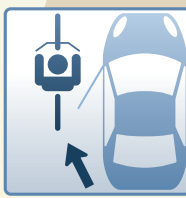
**OBEY TRAFFIC SIGNS AND SIGNALS**  
Bicyclists must follow the same laws as motorists.



**USE HAND SIGNALS**  
Hand signals tell motorists what you intend to do. Signal as a matter of law, courtesy, and self-protection.



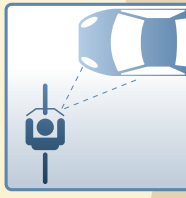
**SCAN THE ROAD BEHIND**  
Learn to look back over your shoulder without losing your balance or swerving left. Some riders use rear-view mirrors.



**BEWARE OF PARKED CARS AND PEDESTRIANS**  
Try to ride about a car door's width away from parked cars. Watch for people opening car doors and pedestrians darting out into the street. Don't weave in and out of parked cars.



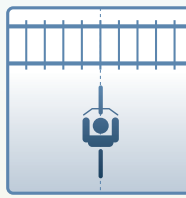
**BEWARE OF APPROACHING VEHICLES TURNING LEFT**  
Many bicycle accidents in New Mexico are caused by a motorist turning left and not seeing the approaching bicyclist.



**WATCH FOR CARS PULLING OUT**  
Make eye contact with drivers. Assume they don't see you until you are sure they do.



**AVOID ROAD HAZARDS**  
Look ahead for parallel-slat sewer grates, gravel, ice, debris, cracks, and potholes. Remember to allow extra distance for stopping in the rain since brakes may be less effective when wet.



**CROSS RAILROAD TRACKS CAREFULLY**  
Cross railroad tracks at a perpendicular angle so your tire does not slip on the rail or drop into the slot, causing a spill. Wet railroad tracks are very slippery.



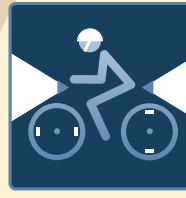
**DRESS APPROPRIATELY WEAR A STURDY HELMET TO PROTECT YOUR HEAD**  
Bright colored clothing will make you more visible to motorists. New Mexico's weather can be unpredictable. Be prepared for rain or snow and sudden changes in temperature. Generally, dress in layers.



**USE A PACK OR RACK TO CARRY THINGS**  
Saddlebags, racks, and baskets are all good ways to carry packages, freeing your hands for safe riding. Never carry more people than the design of your bike permits.



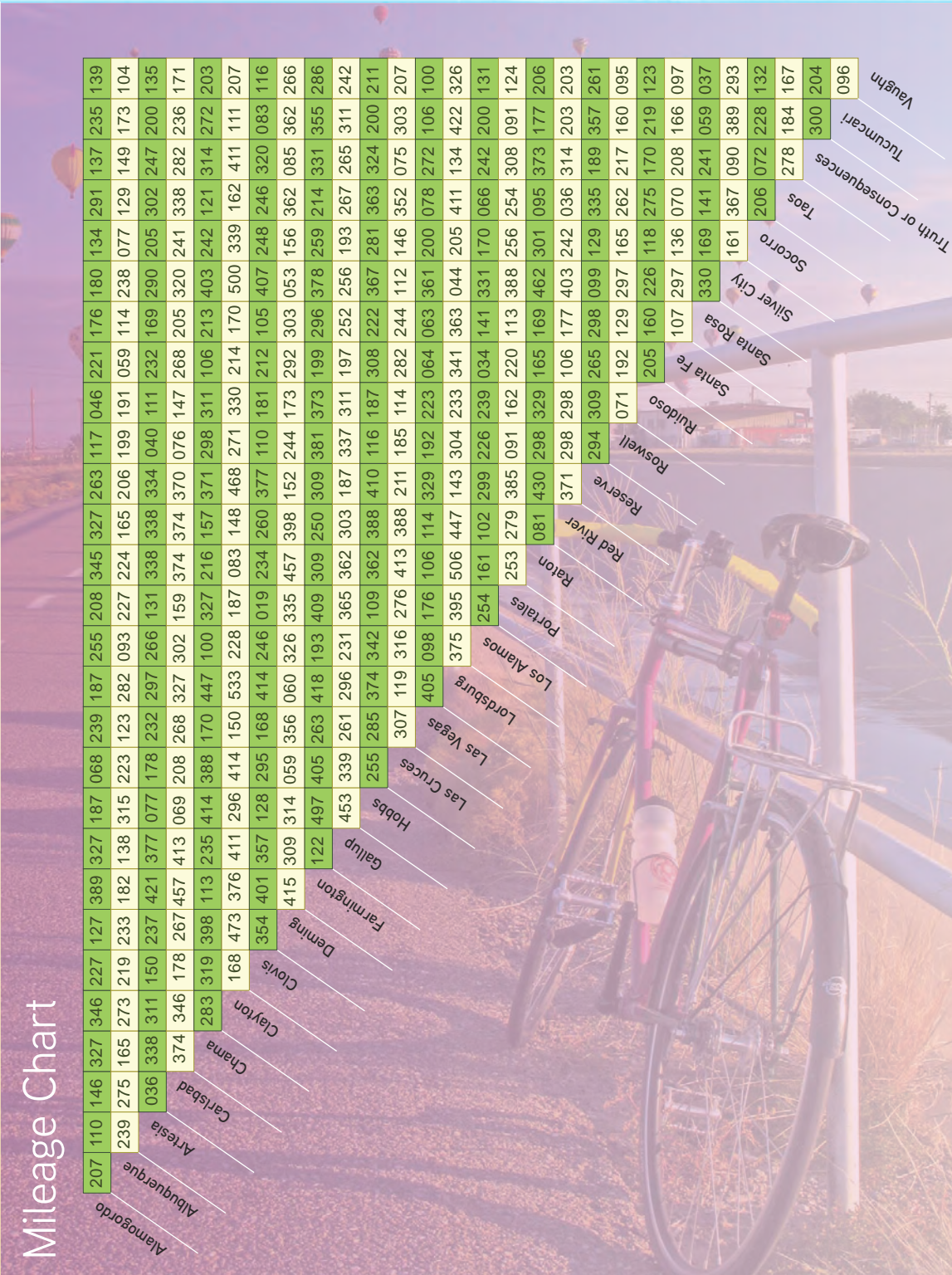
**LOCK YOUR BIKE WHEN YOU'RE GONE**  
Lock up to a post or bike rack, threading the chain through both wheels and the frame if you can. Deter thieves by clearly marking the frame and detachable parts with your bike registration number.



**USE LIGHTS AT NIGHT**  
The law requires a headlight and rear reflector or tail light at night. Wear light-colored clothes with reflective tape for extra visibility. Avoid wearing dark colors and red.



**WATCH FOR CHASING DOGS**  
Dogs are attracted by the spinning of wheels and feet. Ignore them, or try shouting a firm loud "NO". If a dog doesn't stop, dismount with your bike between you and the dog.



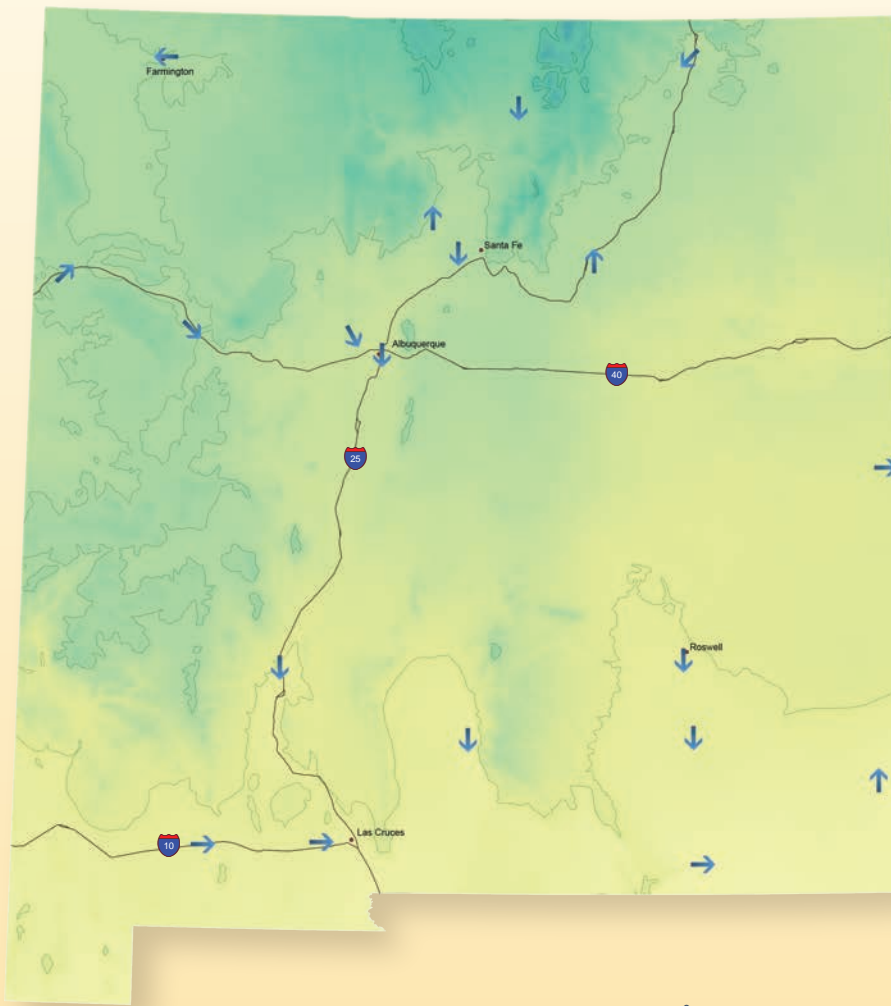
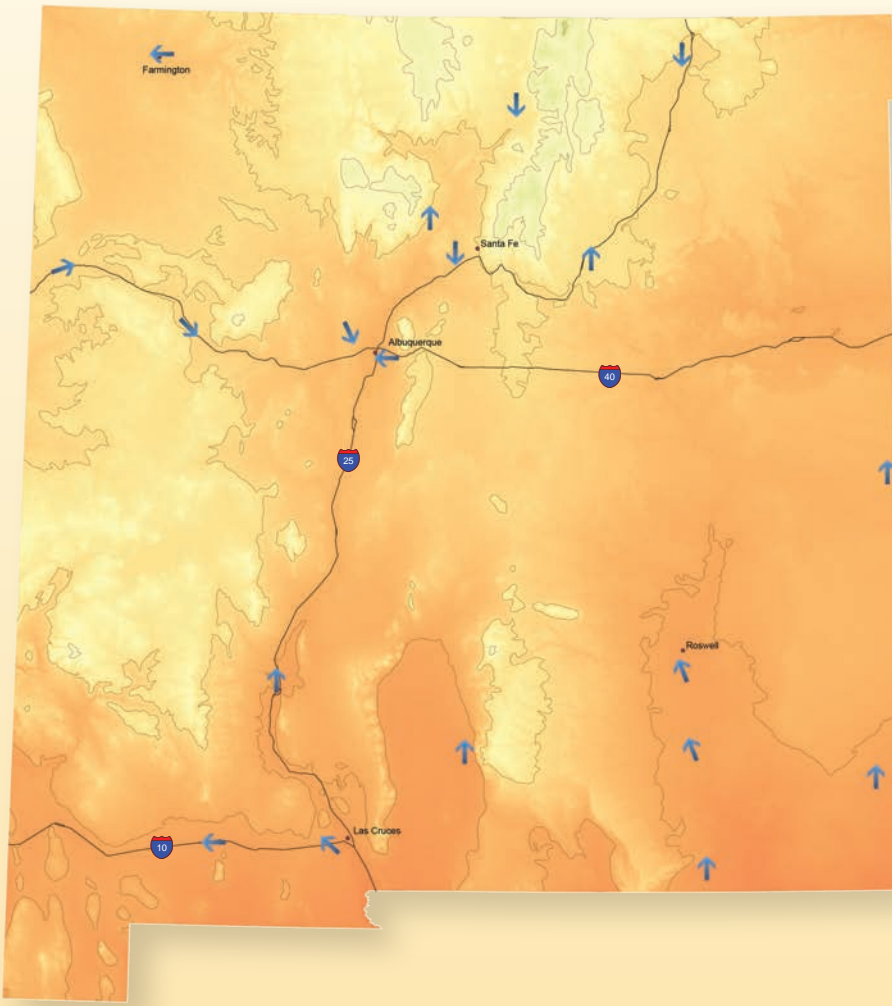
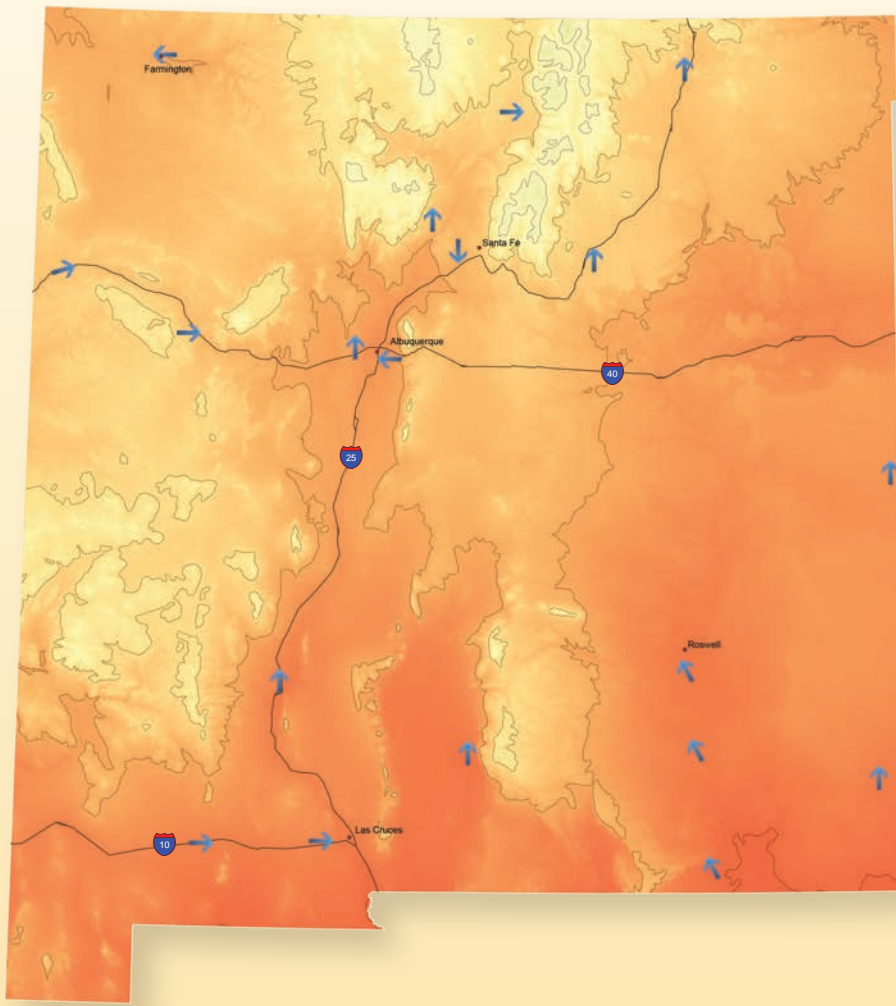
## Average New Mexico Temperatures and Seasonal Wind Direction

March

June

September

December



Temperature (°F)

10° 50° 90°

→ Seasonal Wind Direction

## Bus and Train Connections

Below is information for transit and rail providers in New Mexico. Most providers offer options for transporting your bicycle while you ride.

**ABQ Ride (Albuquerque)**  
Phone: 505.724.3100  
Web: [www.cabq.gov/transit](http://www.cabq.gov/transit)

**Amtrak**  
Phone: 800.872.7245  
Web: [amtrak.com](http://amtrak.com)

**Farmington Red Apple Transit**  
Phone: 505.325.409  
Web: [fmtn.org/index.aspx?nid=279](http://fmtn.org/index.aspx?nid=279)

**Las Cruces RoadRUNNER**  
Phone: 575.541.2500  
Web: [www.las-cruces.org/en/departments/transportation](http://www.las-cruces.org/en/departments/transportation)

**North Central RTD (includes Taos Express)**  
Phone: 866.206.0754  
Web: [www.ncrtd.org](http://www.ncrtd.org)

**Pecos Trails Transit (Roswell)**  
Phone: 575.624.6766  
Web: [roswell-nm.gov/staticpages/index.php/p11-pecos\\_trails\\_buses](http://roswell-nm.gov/staticpages/index.php/p11-pecos_trails_buses)

**New Mexico Rail Runner Express**  
Phone: 866.795.7245  
Web: [riometro.org](http://riometro.org)

**Rio Metro RTD (Albuquerque metro)**  
Phone: 866.795.7245  
Web: [riometro.org](http://riometro.org)

**Santa Fe Trails**  
Phone: 505.955.2001  
Web: [www.santafenm.gov/transit](http://www.santafenm.gov/transit)

For a complete list of rural transit providers, visit: [dot.state.nm.us/en/Transit\\_Rail.html](http://dot.state.nm.us/en/Transit_Rail.html)

In case of Emergency, call 911

New Mexico Roads has information on current roadway conditions, including construction. Please call 511 or visit [NMRoads.com](http://NMRoads.com) for more information.

**New Mexico Department of Transportation (NMDOT)**  
General Office  
1120 Cerrillos Rd.  
Santa Fe, NM 87504  
505.827.5100  
Web: [dot.state.nm.us](http://dot.state.nm.us)



**New Mexico DEPARTMENT OF TRANSPORTATION**  
MOBILITY FOR EVERYONE

Photo credits:  
NMDOT/Jake Schoellkopf

P.O. Box 1149  
Santa Fe, NM 87504-1149

Place Stamp Here