

TYPICAL DETAIL
BID ITEMS 001, 002, AND 003

TITLE:
PARTIAL DEPTH DECK PATCHING

DESCRIPTION:
REMOVAL OF EXISTING UNSOUND CONCRETE AND REINFORCEMENT (IF REQUIRED) AND REPLACEMENT WITH NEW REINFORCEMENT (IF REQUIRED) AND RAPID-SET-CONCRETE OR APPROVED MATERIAL.

LIMITATIONS:
AREA OF REPAIR TO BE MARKED IN THE FIELD BY THE CONTRACTOR AND APPROVED BY THE PROJECT MANAGER.

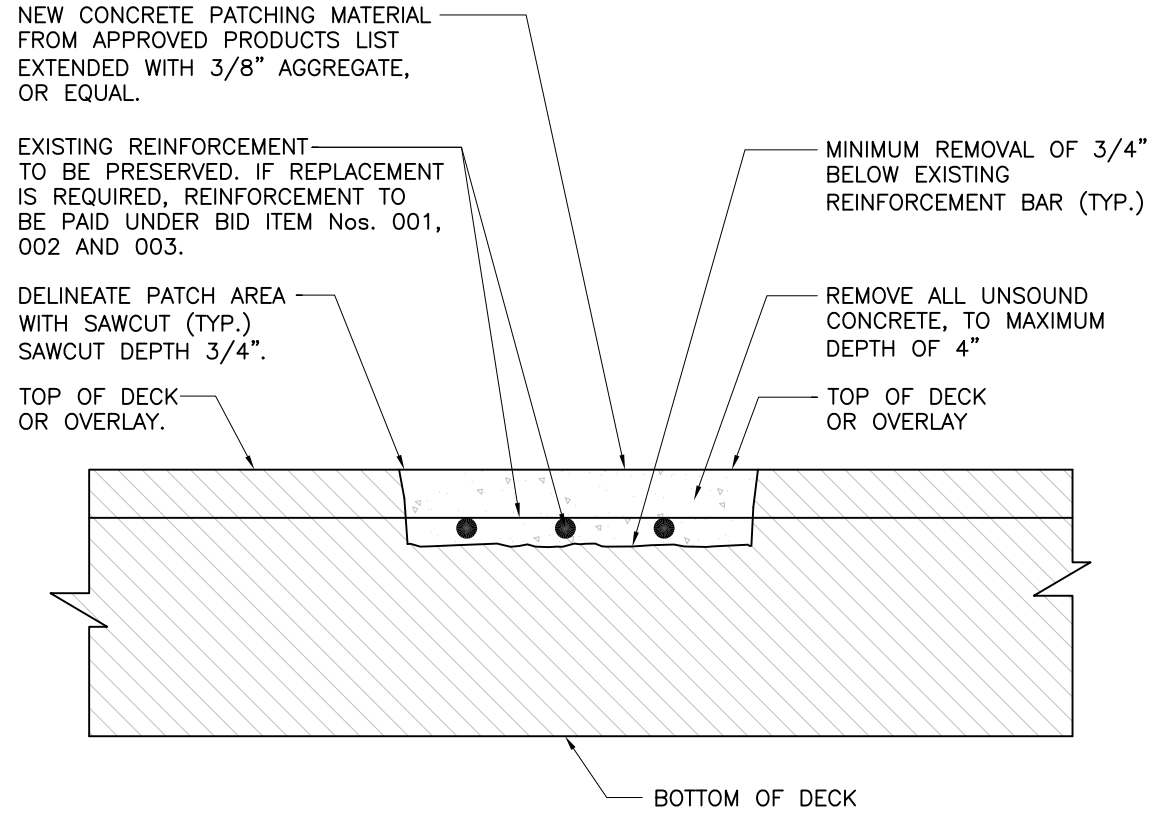
CONSTRUCTION PROCEDURE:
PREPARE SURFACE BY REMOVING ALL DETERIORATED CONCRETE, DIRT, OIL, GREASE AND OTHER BOND INHIBITING MATERIAL. REMOVAL OF UNSOUND CONCRETE TO A MAXIMUM OF 4 INCHES WITH A CLEARANCE OF 3/4 INCH BELOW THE REINFORCEMENT OF THE TOP REINFORCING STEEL MAT; DELINEATE SAW CUTS, THE EXISTING EXPOSED REBAR SHALL BE SANDBLASTED TO REMOVE ALL DELETERIOUS MATERIAL, RESTORED TO ITS ORIGINAL SHAPE AND REPLACED IF NEEDED. APPLY PATCHING MATERIAL IN ACCORDANCE WITH MANUFACTURER'S RECOMMENDATIONS. APPLY FINISH TO MEET EXISTING DECK FINISH.

RAPID-SET-CONCRETE MAY BE USED AT THE DISCRETION OF THE PROJECT MANAGER.

UNIT BID PRICE IS FOR THE FIRST 4". THE CONTRACTOR WILL BE PAID 25% EXTRA FOR EACH ADDITIONAL INCH OF DEPTH BEYOND 4" DIRECTED TO BE REMOVED.

RESOURCE REQUIREMENTS:
APPROVED PATCHING MATERIAL OR APPROVED EQUAL AND CLEANING.

REFERENCES:
SPECIAL PROVISION SECTION 512 (SUPERSTRUCTURE CONCRETE) DATED 02/02/15, SECTION 533 AND SECTION 540 OF THE NEW MEXICO DEPARTMENT OF TRANSPORTATION STANDARD SPECIFICATIONS FOR HIGHWAY AND BRIDGE CONSTRUCTION, CURRENT EDITION.



PARTIAL DEPTH DECK PATCHING

3			
2			
1			
NO.	DESCRIPTION	DATE	BY
REVISIONS			
NEW MEXICO STATE DEPARTMENT OF TRANSPORTATION			
BRIDGE REPAIR PRICE AGREEMENT			
BID ITEMS 001, 002, AND 003 PARTIAL DEPTH DECK PATCHING			

TITLE:

FULL DEPTH DECK REPAIR AND/OR REPLACEMENT

DESCRIPTION:

REMOVAL OF EXISTING UNSOUND CONCRETE AND REINFORCEMENT (IF REQUIRED) AND REPLACEMENT WITH NEW REINFORCEMENT (IF REQUIRED) AND RAPID-SET-CONCRETE OR APPROVED MATERIAL.

LIMITATIONS:

AREA OF REPAIR TO BE MARKED IN THE FIELD BY THE CONTRACTOR AND APPROVED BY THE PROJECT MANAGER.

CONSTRUCTION PROCEDURE:

PREPARE SURFACE BY REMOVING ALL DETERIORATED CONCRETE, DIRT, OIL, GREASE AND OTHER BOND INHIBITING MATERIAL. REMOVAL OF UNSOUND CONCRETE TO THE FULL DEPTH OF DECK, THE EXISTING EXPOSED REBAR SHALL BE SANDBLASTED TO REMOVE ALL DELETERIOUS MATERIAL, RESTORED TO ITS ORIGINAL SHAPE AND REPLACED IF NEEDED. APPLY PATCHING MATERIAL IN ACCORDANCE WITH MANUFACTURER'S RECOMMENDATIONS. APPLY FINISH TO MEET EXISTING DECK FINISH. TEMPORARY FORMING SHALL BE REMOVED AFTER COMPLETION OF THE WORK.

RAPID-SET-CONCRETE MAY BE USED AT THE DISCRETION OF THE PROJECT MANAGER.

UNIT BID PRICE IS FOR THE FIRST 10". THE CONTRACTOR WILL BE PAID 10% EXTRA FOR EACH ADDITIONAL INCH OF DEPTH BEYOND 10" DIRECTED TO BE REMOVED.

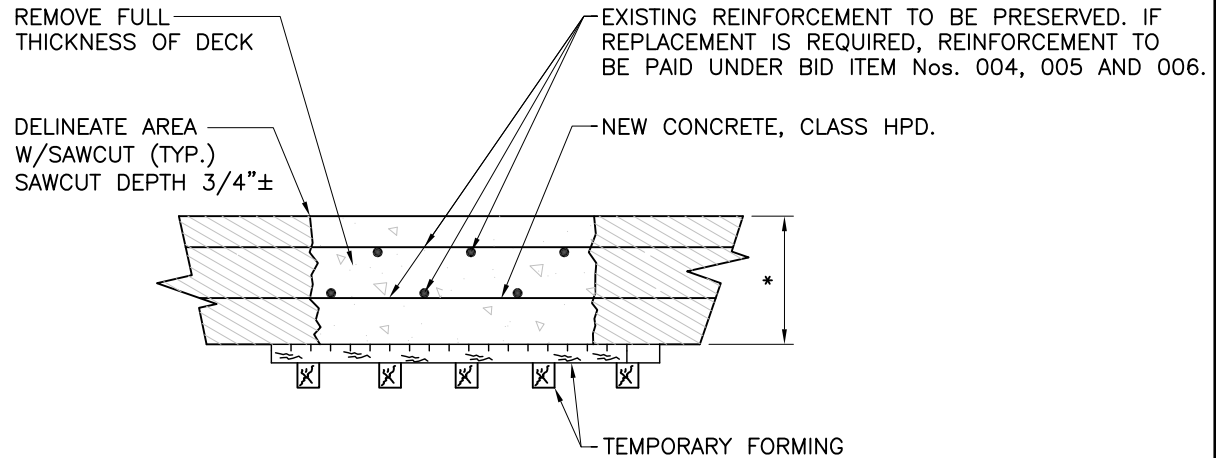
RESOURCE REQUIREMENTS:

APPROVED PATCHING MATERIAL FROM APPROVED PRODUCTS LIST; FORMING AND PLACEMENT PROCEDURE.

REFERENCES:

SPECIAL PROVISION SECTION 512 (SUPERSTRUCTURE CONCRETE) DATED 02/02/15, SECTION 512, SECTION 533 AND SECTION 540 OF THE NEW MEXICO DEPARTMENT OF TRANSPORTATION STANDARD SPECIFICATIONS FOR HIGHWAY AND BRIDGE CONSTRUCTION, CURRENT EDITION.

TYPICAL DETAIL BID ITEMS 004, 005, AND 006



FULL DEPTH DECK REPAIR AND/OR REPLACEMENT

3				
2				
1				
NO.	DESCRIPTION	DATE	BY	
REVISIONS				
NEW MEXICO STATE DEPARTMENT OF TRANSPORTATION				
BRIDGE REPAIR PRICE AGREEMENT				
BID ITEMS 004, 005, AND 006 FULL DEPTH DECK REPAIR AND/OR REPLACEMENT				

TITLE: **STRIP SEAL JOINT
(AT ABUTMENT)
FULL DEPTH REPLACEMENT**

DESCRIPTION:
JOINT REMOVED AND REPLACED: REMOVAL OF EXISTING UNSOUND CONCRETE, REBAR AND EXISTING JOINT. FORMING FOR PLACEMENT OF NEW CONCRETE, REINFORCEMENT, JOINT AND COMPONENTS. (IT MAY BE NECESSARY TO CONSTRUCT A HAUNCH TO PROVIDE ADEQUATE COVER TO ACCOMMODATE NEW STEEL EXTRUSIONS.) AN ALTERNATE JOINT SYSTEM MAY BE USED AS DIRECTED BY THE PROJECT MANAGER.

LIMITATIONS:
REPLACEMENT WORK TO BE DETERMINED AND AGREED TO BY THE DISTRICT AND THE CONTRACTOR.

CONSTRUCTION PROCEDURE:
PREPARE SURFACE BY REMOVING ALL DETERIORATED CONCRETE, EXISTING JOINT MEMBERS, DIRT, OIL, GREASE, AND OTHER BOND INHIBITING MATERIAL. REMOVAL OF UNSOUND CONCRETE TO BE FULL DEPTH OF THE DECK. THE EXISTING REBAR SHALL BE PRESERVED AND SANDBLASTED TO REMOVE ALL DELETERIOUS MATERIAL AND RESTORED TO ITS ORIGINAL SHAPE, ADD REBAR AS NEEDED. APPLY MATERIAL IN ACCORDANCE WITH MANUFACTURER'S RECOMMENDATIONS. APPLY FINISH TO MEET EXISTING DECK FINISH.

RAPID-SET-CONCRETE MAY BE USED AT THE DISCRETION OF THE PROJECT MANAGER.

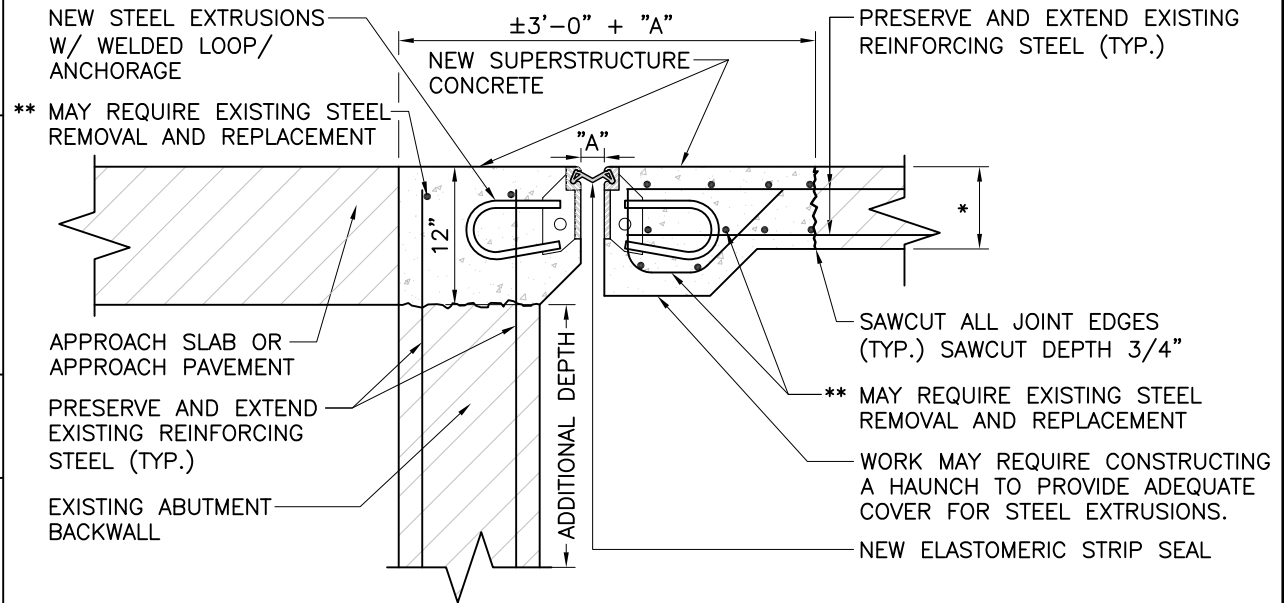
UNIT BID PRICE IS FOR THE FIRST 12". THE CONTRACTOR WILL BE PAID FOR ADDITIONAL WORK AS FOLLOWS, IF REPAIR OF ABUTMENT OR FOOTING IS REQUIRED;

ADDITIONAL DEPTH	ADDITIONAL PAYMENT
1"-12"	25%
13"-24"	50%

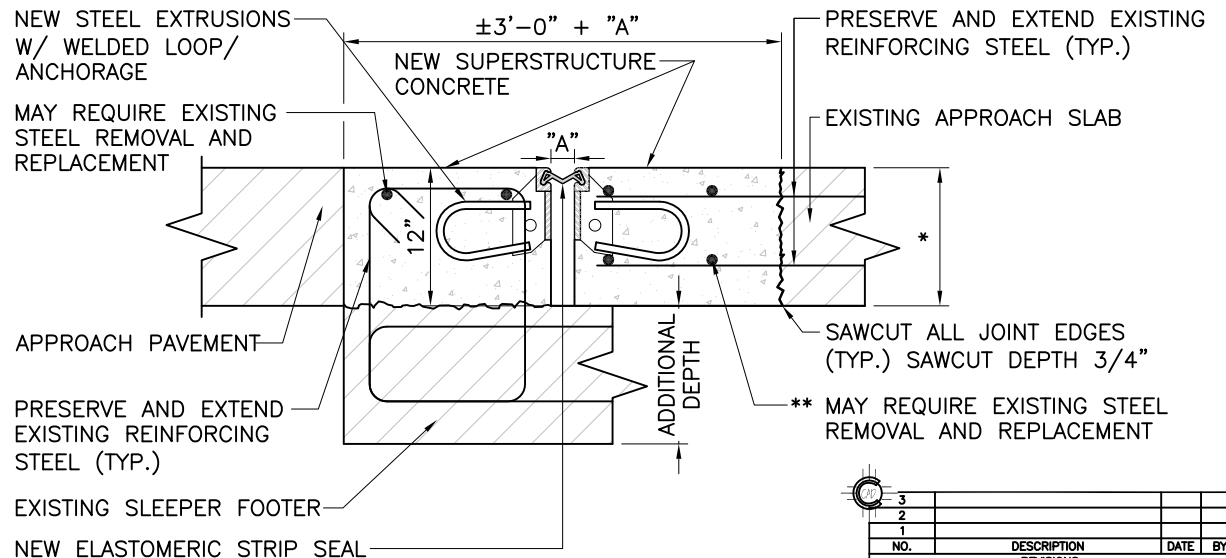
RESOURCE REQUIREMENTS:
APPROVED EXPANSION JOINT MATERIAL; APPROVED NEW SUPERSTRUCTURE CONCRETE; FORMING PROCEDURES OR APPROVED EQUAL.

REFERENCES:
SPECIAL PROVISION SECTION 512 (SUPERSTRUCTURE CONCRETE) DATED 02/02/15, STANDARD DRAWING 562-01-1/3 THRU 3/3; SECTION 512, SECTION 540 AND SECTION 562 OF THE NEW MEXICO DEPARTMENT OF TRANSPORTATION STANDARD SPECIFICATIONS FOR HIGHWAY AND BRIDGE CONSTRUCTION, CURRENT EDITION.

TYPICAL DETAIL – BID ITEM 034



STRIP SEAL JOINT-AT ABUTMENT



STRIP SEAL JOINT-AT SLEEPER FOOTER

- * THICKNESS VARIES, UP TO 12" (A FEW SLAB DECK BRIDGES MAY BE UP TO 14"±).
- ** IF BARS REQUIRE REPLACEMENT, REINFORCEMENT TO BE PAID UNDER BID ITEM No. 034.

NO.	DESCRIPTION	DATE	BY
3			
2			
1			
REVISIONS			
NEW MEXICO STATE DEPARTMENT OF TRANSPORTATION			
BRIDGE REPAIR PRICE AGREEMENT			
BID ITEM 034 STRIP SEAL JOINT FULL DEPTH REPLACEMENT AT ABUTMENTS			

TITLE:

STRIP SEAL JOINT (INTERMEDIATE) FULL DEPTH REPLACEMENT

DESCRIPTION:

JOINT REMOVED AND REPLACED: REMOVAL OF EXISTING UNSOUND CONCRETE, REBAR AND EXISTING JOINT. FORMING FOR PLACEMENT OF NEW CONCRETE, REINFORCEMENT, JOINT AND COMPONENTS. (IT MAY BE NECESSARY TO CONSTRUCT A HAUNCH TO PROVIDE ADEQUATE COVER TO ACCOMMODATE NEW STEEL EXTRUSIONS.) AN ALTERNATE JOINT SYSTEM MAY BE USED AS DIRECTED BY THE PROJECT MANAGER.

LIMITATIONS:

REPLACEMENT WORK TO BE DETERMINED AND AGREED TO BY THE DISTRICT AND THE CONTRACTOR.

CONSTRUCTION PROCEDURE:

PREPARE SURFACE BY REMOVING ALL DETERIORATED CONCRETE, EXISTING JOINT MEMBERS, DIRT, OIL, GREASE, AND OTHER BOND INHIBITING MATERIAL. REMOVAL OF UNSOUND CONCRETE TO BE FULL DEPTH OF THE DECK. THE EXISTING REBAR SHALL BE PRESERVED AND SANDBLASTED TO REMOVE ALL DELETERIOUS MATERIAL AND RESTORED TO ITS ORIGINAL SHAPE, ADD REBAR AS NEEDED. APPLY MATERIAL IN ACCORDANCE WITH MANUFACTURER'S RECOMMENDATIONS. APPLY FINISH TO MEET EXISTING DECK FINISH.

RAPID-SET-CONCRETE MAY BE USED AT THE DISCRETION OF THE PROJECT MANAGER.

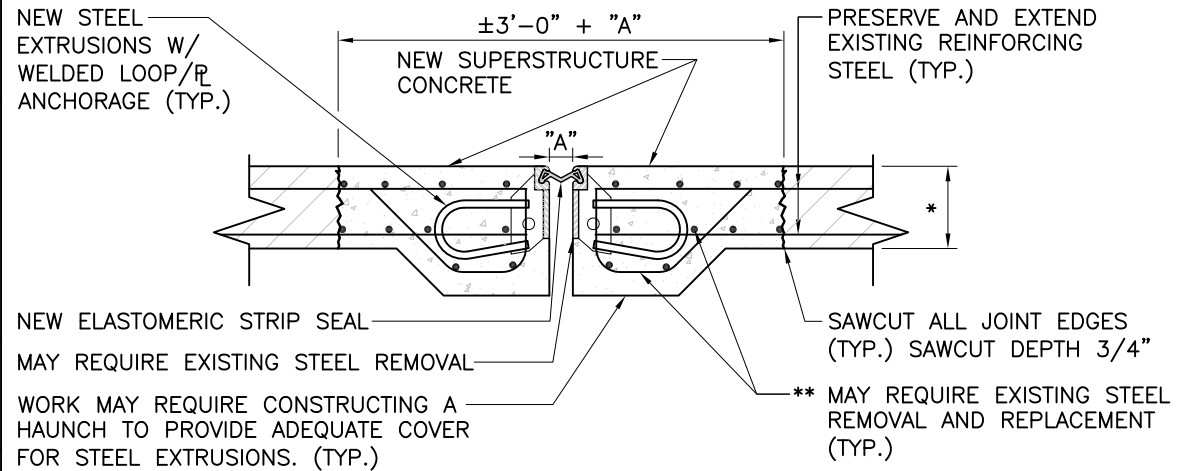
RESOURCE REQUIREMENTS:

APPROVED EXPANSION JOINT MATERIAL; APPROVED NEW SUPERSTRUCTURE CONCRETE; FORMING PROCEDURES OR APPROVED EQUAL.

REFERENCES:

SPECIAL PROVISION SECTION 512 (SUPERSTRUCTURE CONCRETE) DATED 02/02/15, STANDARD DRAWING 562-01-1/3 THRU 3/3; SECTION 512, SECTION 540 AND SECTION 562 OF THE NEW MEXICO DEPARTMENT OF TRANSPORTATION STANDARD SPECIFICATIONS FOR HIGHWAY AND BRIDGE CONSTRUCTION, CURRENT EDITION.

TYPICAL DETAIL – BID ITEM 035



STRIP SEAL JOINT-INTERMEDIATE (FULL DEPTH REPLACEMENT)

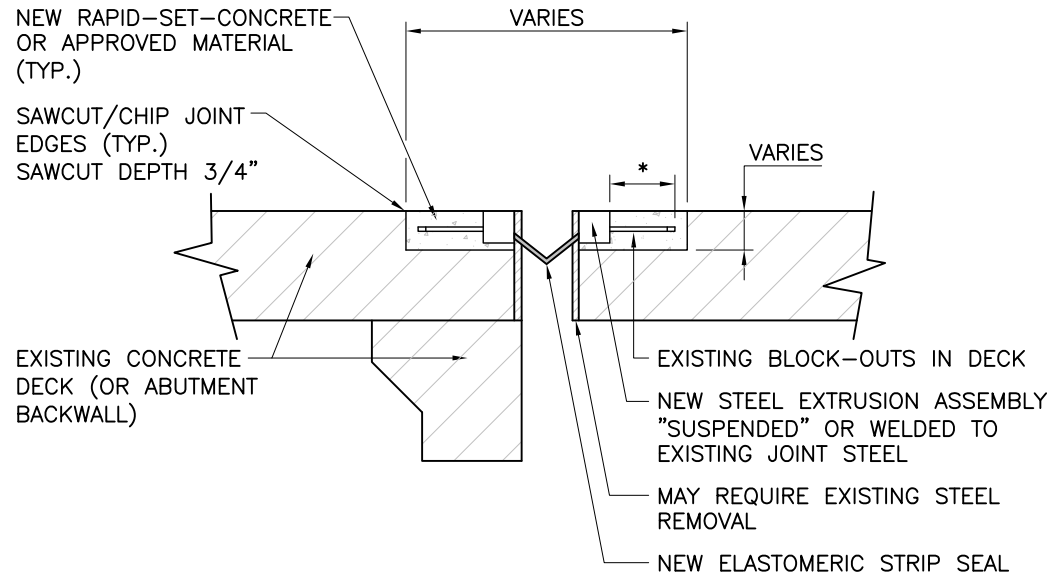
* THICKNESS VARIES, UP TO 10"± (A FEW SLAB DECK BRIDGES MAY BE UP TO 14"±).

** IF BARS REQUIRE REPLACEMENT, REINFORCEMENT TO BE PAID UNDER BID ITEM No. 035.

3			
2			
1			
NO.	DESCRIPTION	DATE	BY
REVISIONS			
NEW MEXICO STATE DEPARTMENT OF TRANSPORTATION			
BRIDGE REPAIR PRICE AGREEMENT			
BID ITEM 035 STRIP SEAL JOINT FULL DEPTH REPLACEMENT AT PIERS			

TYPICAL DETAIL – BID ITEM 036

TITLE: <h3 style="text-align: center; margin: 0;">STRIP SEAL JOINT (PARTIAL DEPTH REPLACEMENT)</h3>
DESCRIPTION: JOINT REMOVED AND REPLACED: REMOVAL OF EXISTING CONCRETE, REBAR, EXISTING JOINT, FORMING, PLACEMENT OF CONCRETE AND PLACEMENT OF NEW JOINT COMPONENTS.
LIMITATIONS: REPLACEMENT WORK TO BE DETERMINED AND AGREED TO BY THE DISTRICT AND THE CONTRACTOR.
CONSTRUCTION PROCEDURE: PREPARE SURFACE BY REMOVING ALL DETERIORATED CONCRETE, EXISTING JOINT MEMBERS, DIRT, OIL, GREASE, AND OTHER BOND INHIBITING MATERIAL. REMOVE CONCRETE TO THE DEPTH REQUIRED TO ACCOMODATE THE NEW STEEL EXTRUSION. PRESERVE AND CLEAN EXISTING REBAR. INSTALL MATERIAL IN ACCORDANCE WITH MANUFACTURER'S RECOMMENDATIONS. APPLY FINISH TO MEET EXISTING DECK FINISH. RAPID-SET-CONCRETE MAY BE USED AT THE DISCRETION OF THE PROJECT MANAGER.
RESOURCE REQUIREMENTS: APPROVED EXPANSION JOINT MATERIAL; APPROVED NEW SUPERSTRUCTURE CONCRETE; FORMING AND PLACEMENT OR APPROVED EQUAL.
REFERENCES: SPECIAL PROVISIONS FOR SECTION 512 (SUPERSTRUCTURE CONCRETE) DATED 02/02/15, STANDARD DRAWING 562-01-1/3 THRU 3/3; SECTION 533 AND SECTION 562 OF THE NEW MEXICO DEPARTMENT OF TRANSPORTATION STANDARD SPECIFICATIONS FOR HIGHWAY AND BRIDGE CONSTRUCTION, CURRENT EDITION.



* MIN. = 3 1/2" TO MAX. 13"

STRIP SEAL JOINT (PARTIAL DEPTH REPLACEMENT)

EXISTING JOINT MEMBERS REMOVED
AND REPLACED WITH NEW COMPONENTS

3			
2			
1			
NO.	DESCRIPTION	DATE	BY
REVISIONS			
NEW MEXICO STATE DEPARTMENT OF TRANSPORTATION			
BRIDGE REPAIR PRICE AGREEMENT			
BID ITEM 036 STRIP SEAL JOINT PARTIAL DEPTH REPLACEMENT			

TITLE:

JOINT SEALS

DESCRIPTION:

REMOVAL OF EXISTING JOINT SEALS AND REPLACEMENT WITH NEW JOINT SEALS.

LIMITATIONS:

JOINT WORK TO BE DETERMINED AND AGREED TO BY THE DISTRICT AND THE CONTRACTOR.

CONSTRUCTION PROCEDURE:

PREPARE AND CLEAN STEEL SURFACE OR CONCRETE BY REMOVING DIRT, OIL, GREASE, AND OTHER BOND INHIBITING MATERIALS TO ACCEPT NEW JOINT SEALS; THE EXISTING EXPOSED REBAR SHALL BE SANDBLASTED TO REMOVE ALL DELETERIOUS MATERIAL AND RESTORED TO ITS ORIGINAL SHAPE; APPLY MATERIAL IN ACCORDANCE WITH MANUFACTURER'S RECOMMENDATIONS.

RAPID-SET-CONCRETE MAY BE USED AT THE DISCRETION OF THE DISTRICT.

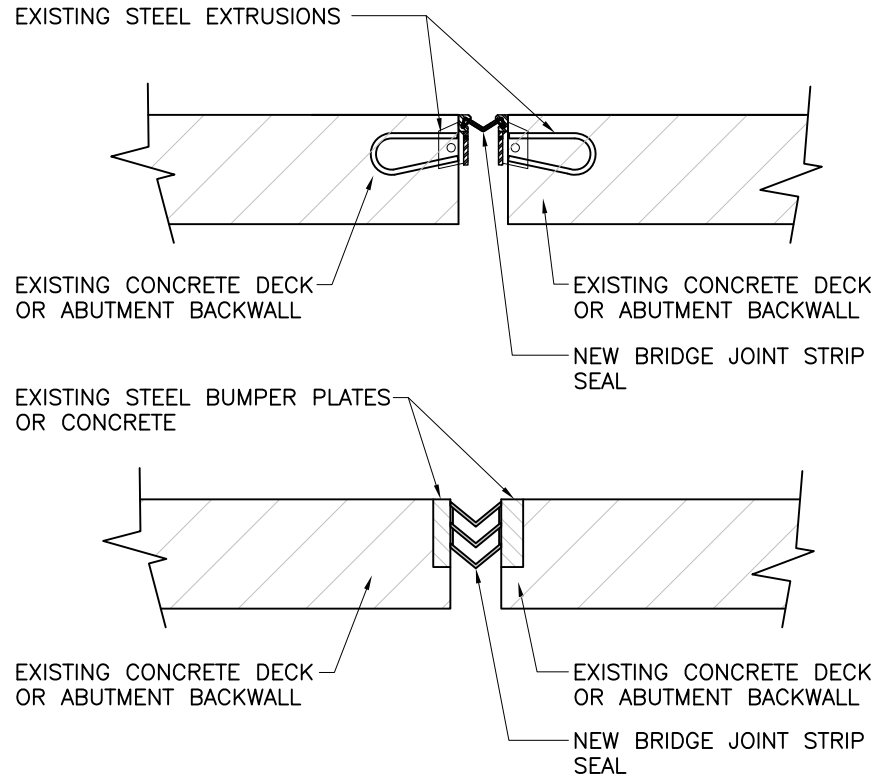
RESOURCE REQUIREMENTS:

APPROVED MATERIALS FOR JOINT REPAIR AND PLACEMENT PROCEDURE.

REFERENCES:

STANDARD DRAWING 562-01-1/3 THRU 3/3; SECTION 561 AND SECTION 562 OF THE NEW MEXICO DEPARTMENT OF TRANSPORTATION STANDARD SPECIFICATIONS FOR HIGHWAY AND BRIDGE CONSTRUCTION, CURRENT EDITION.

TYPICAL DETAIL - BID ITEM 037



JOINT SEALS

VARIOUS JOINT SEAL COMPONENTS
INSTALLED AT EXISTING DECK JOINT

3				
2				
1				
NO.	DESCRIPTION	DATE	BY	
REVISIONS				
NEW MEXICO STATE DEPARTMENT OF TRANSPORTATION				
BRIDGE REPAIR PRICE AGREEMENT				
BID ITEM 037 JOINT SEALS				

TITLE:

PREMOLDED JOINT SEAL

DESCRIPTION:
REMOVAL OF EXISTING JOINT AND INSTALLATION OF PREFORMED JOINT MATERIAL.

LIMITATIONS:
JOINT WORK TO BE DETERMINED AND AGREED TO BY THE DISTRICT AND THE CONTRACTOR.

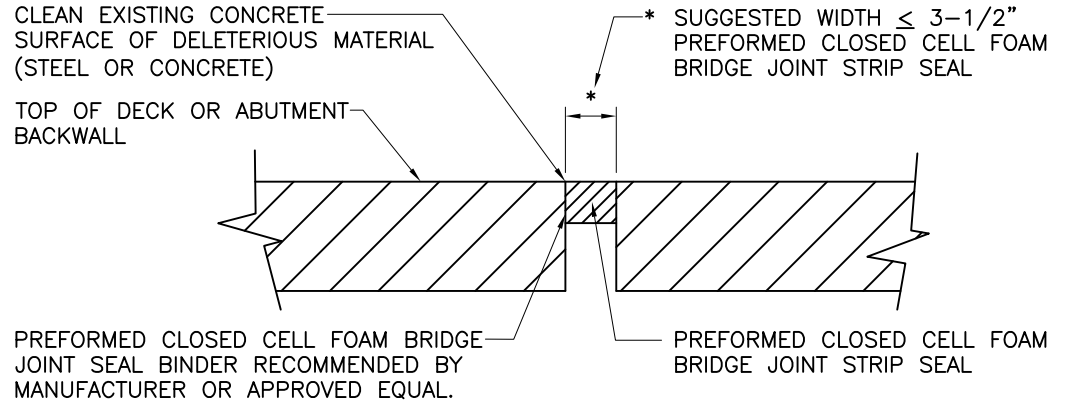
CONSTRUCTION PROCEDURE:
PREPARE SURFACE BY REMOVING ALL DIRT, OIL, GREASE AND OTHER BOND INHIBITING MATERIALS. INSTALL NEW MATERIALS IN ACCORDANCE WITH MANUFACTURERS RECOMMENDATIONS. SAWCUT OR CHIPPING OF EXISTING CONCRETE MAY BE REQUIRED.

REQUIRED CERTIFICATION OF APPROVED CONTRACTOR FOR THE INSTALLATION OF PREFORMED CLOSED CELL FOAM BRIDGE JOINT STRIP SEALS AND LABOR AND A FIVE (5) YEAR WARRANTY ON INSTALLED PREFORMED CLOSED CELL FOAM BRIDGE JOINT STRIP SEALS AND LABOR SHALL BE FURNISHED IN WRITING TO THE DISTRICT ENGINEER OR DISTRICT ENGINEER'S DESIGNEE.

RESOURCE REQUIREMENTS:
APPROVED EXPANSION JOINT MATERIAL AND APPROVED PLACEMENT PROCEDURES.

REFERENCES:
STANDARD DRAWING 564-01-1/1; AND SECTION 564 OF THE NEW MEXICO DEPARTMENT OF TRANSPORTATION STANDARD SPECIFICATIONS FOR HIGHWAY AND BRIDGE CONSTRUCTION, CURRENT EDITION..

TYPICAL DETAIL – BID ITEM 038



* WIDTH VARIES WITH PRODUCT SELECTED REFER TO MANUFACTURER'S RECOMMENDATIONS

PREMOLDED JOINT SEAL

REMOVAL OF EXISTING JOINT AND INSTALLATION OF NEW JOINT MATERIAL

3			
2			
1			
NO.	DESCRIPTION	DATE	BY
REVISIONS			
NEW MEXICO STATE DEPARTMENT OF TRANSPORTATION			
BRIDGE REPAIR PRICE AGREEMENT			
BID ITEM 038 PREMOLDED JOINT SEAL			

TITLE:

PREMOLDED JOINT SEAL WITH CONCRETE REMOVAL

DESCRIPTION:

REMOVAL OF EXISTING JOINT AND CONCRETE, INSTALLATION OF PREMOLDED JOINT SEAL, RAPID-SET-CONCRETE OR APPROVED MATERIAL AND NEW JOINT COMPONENTS.

LIMITATIONS:

JOINT WORK TO BE DETERMINED AND AGREED TO BY THE DISTRICT AND THE CONTRACTOR.

CONSTRUCTION PROCEDURE:

PREPARE SURFACE BY REMOVING EXISTING JOINT, SAW CUTTING AND CHIPPING OF CONCRETE; REMOVE DIRT, OIL, GREASE AND OTHER BOND INHIBITING MATERIAL; THE EXISTING EXPOSED REBAR SHALL BE SANDBLASTED TO REMOVE ALL DELETERIOUS MATERIAL AND RESTORED TO ITS ORIGINAL SHAPE; APPLY MATERIALS IN ACCORDANCE WITH MANUFACTURER'S RECOMMENDATIONS.

SAW CUTTING (3/4") AND CHIPPING OF EXISTING CONCRETE TO A MINIMUM DEPTH OF 2-1/2" IS REQUIRED.

RAPID-SET-CONCRETE MAY BE USED AT THE DISCRETION OF THE PROJECT MANAGER.

REQUIRED CERTIFICATION OF APPROVED CONTRACTOR FOR THE INSTALLATION OF PREFORMED CLOSED CELL FOAM BRIDGE JOINT SEALS AND LABOR AND A FIVE (5) YEAR WARRANTY ON INSTALLED PREFORMED CLOSED CELL FOAM BRIDGE JOINT SEALS AND LABOR SHALL BE FURNISHED IN WRITING TO THE DISTRICT ENGINEER OR DISTRICT ENGINEER'S DESIGNEE.

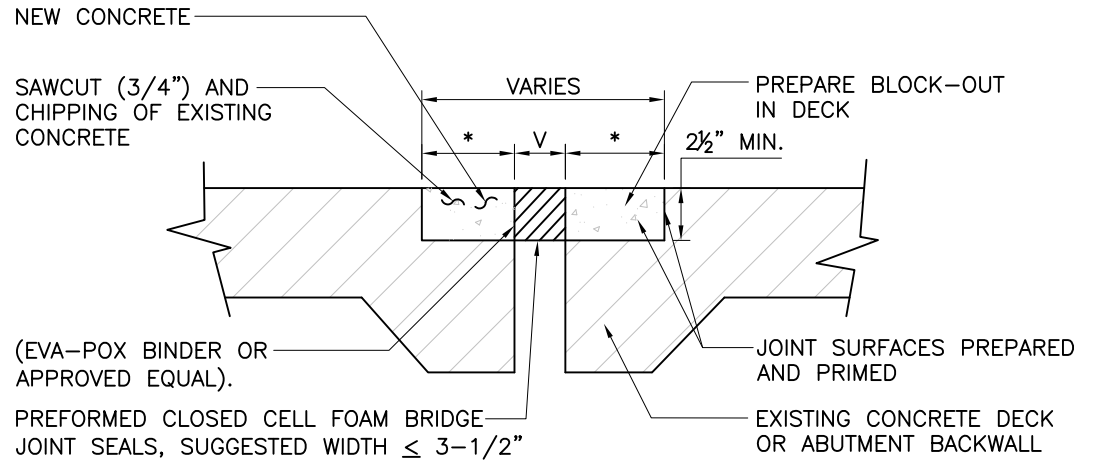
RESOURCE REQUIREMENTS:

APPROVED MATERIALS FOR JOINT REPAIR AND PLACEMENT PROCEDURE.

REFERENCES:

SPECIAL PROVISION SECTION 512 (SUPERSTRUCTURE CONCRETE) DATED 02/02/15, STANDARD DRAWING 564-01-1/1; SECTION 512, SECTION 533 AND SECTION 564 OF THE NEW MEXICO DEPARTMENT OF TRANSPORTATION STANDARD SPECIFICATIONS FOR HIGHWAY AND BRIDGE CONSTRUCTION, CURRENT EDITION.

TYPICAL DETAIL – BID ITEM 039



PREMOLDED JOINT SEAL WITH CONCRETE REMOVAL

INSTALLATION OF PREMOLDED JOINT SEAL,
RAPID SET CONCRETE AND JOINT COMPONENTS

3				
2				
1				
NO.	DESCRIPTION	DATE	BY	
REVISIONS				
NEW MEXICO STATE DEPARTMENT OF TRANSPORTATION				
BRIDGE REPAIR PRICE AGREEMENT				
BID ITEM 039 PREMOLDED JOINT SEAL WITH CONCRETE REMOVAL				

TYPICAL DETAIL – BID ITEM 041

TITLE:

SUBSTRUCTURE REPLACEMENT

DESCRIPTION:

REMOVAL OF EXISTING UNSOUND CONCRETE, REBAR, ETC.; INCLUDING THE FORMING AND PLACEMENT OF NEW CONCRETE FOR PIER CAPS, PIER COLUMNS, AND ABUTMENTS. (REPLACEMENT OF REBAR WILL BE PAID UNDER BID ITEM No. 048).

LIMITATIONS:

AREAS OF WORK TO BE DETERMINED AND AGREED TO BY THE DISTRICT AND THE CONTRACTOR.

CONSTRUCTION PROCEDURE:

PREPARE AREA BY REMOVING ALL DETERIORATED CONCRETE, DIRT, OIL, GREASE, AND OTHER BOND INHIBITING MATERIAL. THE EXISTING EXPOSED REBAR SHALL BE SANDBLASTED TO REMOVE ALL DELETERIOUS MATERIAL, RESTORED TO ITS ORIGINAL SHAPE AND REPLACED OR EXTENDED AS NEEDED TO FACILITATE INSTALLATION. IN THE CASE OF REPLACING AN ABUTMENT OR PIER CAP, THE EXISTING PILES AND/OR EXISTING REBAR SHALL BE RESTORED TO THEIR ORIGINAL SHAPE FOR INCORPORATION INTO THE NEW SUBSTRUCTURE CONCRETE. APPLY MATERIALS IN ACCORDANCE WITH MANUFACTURER'S RECOMMENDATIONS. APPLY FINISH TO MEET EXISTING DECK FINISH AND STRUCTURE FINISH.

RAPID-SET-CONCRETE MAY BE USED AT THE DISCRETION OF THE PROJECT MANAGER.

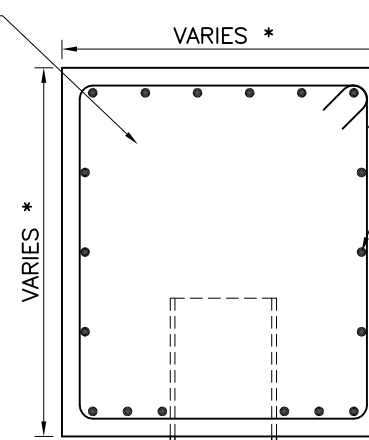
RESOURCE REQUIREMENTS:

APPROVED PATCHING MATERIALS, REBAR, ETC. AND PLACEMENT PROCEDURE.

REFERENCES:

SECTION 510, SECTION 511, SECTION 533 AND SECTION 540 OF THE NEW MEXICO DEPARTMENT OF TRANSPORTATION STANDARD SPECIFICATIONS FOR HIGHWAY AND BRIDGE CONSTRUCTION, CURRENT EDITION.

NEW ABUTMENT/PIER CAP CONSTRUCTED OF NEW SUBSTRUCTURE CONCRETE.



EXISTING PILE (OR CONCRETE COLUMN) TO BE PRESERVED, CLEANED, STRAIGHTENED AND INCORPORATED INTO THE NEW SUBSTRUCTURE CONCRETE.

* NEW REINFORCEMENT TO BE PAID UNDER BID ITEM No. 048 – REINFORCING BARS.

* THE DIMENSIONS OF THE NEW ABUTMENT/PIER CAP SHALL MATCH THE EXISTING CAP. REFER TO THE AS-BUILTS FOR DIMENSIONS AND REINFORCEMENT.

ABUTMENT/PIER CAP REPLACEMENT

3				
2				
1				
NO.	DESCRIPTION	DATE	BY	
REVISIONS				
NEW MEXICO STATE DEPARTMENT OF TRANSPORTATION				
BRIDGE REPAIR PRICE AGREEMENT				
BID ITEM 041 SUBSTRUCTURE REPLACEMENT				

TITLE:

BACKWALL REPLACEMENT

DESCRIPTION:
REMOVAL OF EXISTING UNSOUND CONCRETE AND REINFORCEMENT (IF REQUIRED) AND REPLACEMENT WITH NEW REINFORCEMENT (IF REQUIRED) AND APPROVED CONCRETE.

LIMITATIONS:
REPLACEMENT WORK TO BE DETERMINED AND AGREED TO BY THE DISTRICT AND THE CONTRACTOR.

CONSTRUCTION PROCEDURE:
PREPARE SURFACE BY REMOVING ALL DETERIORATED CONCRETE, EXISTING JOINT MEMBERS, DIRT, OIL, GREASE AND OTHER BOND INHIBITING MATERIALS. THE EXISTING REBAR SHALL BE PRESERVED AND SANDBLASTED TO REMOVE ALL DELETERIOUS MATERIAL AND RESTORED TO ITS ORIGINAL SHAPE. ADD REBAR AS NEEDED. APPLY MATERIALS IN ACCORDANCE WITH MANUFACTURER'S RECOMMENDATIONS.

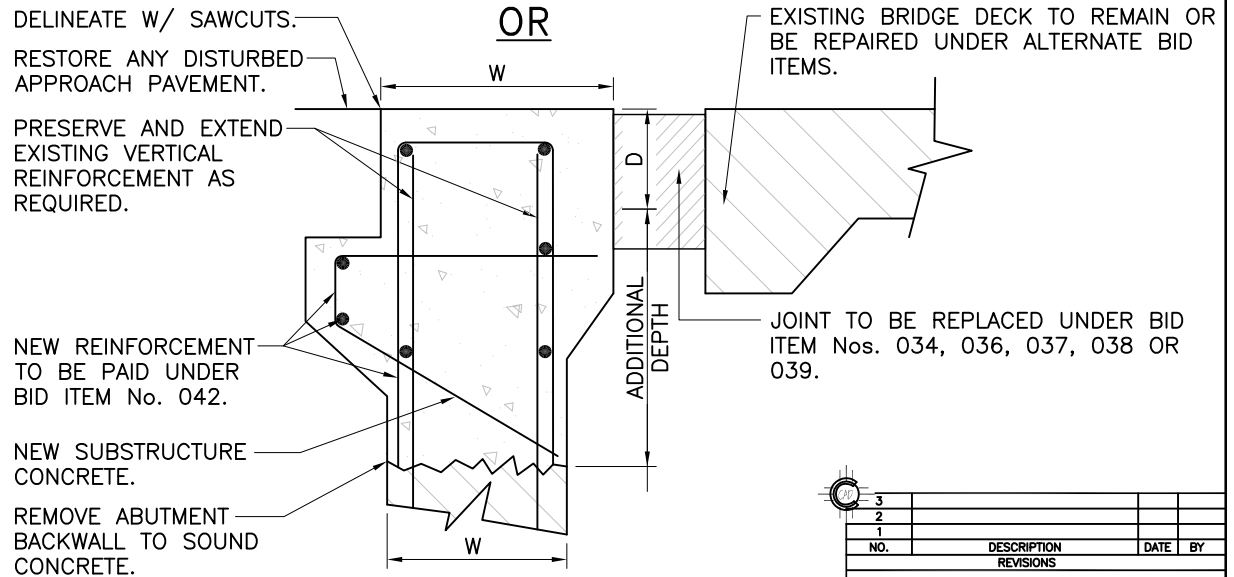
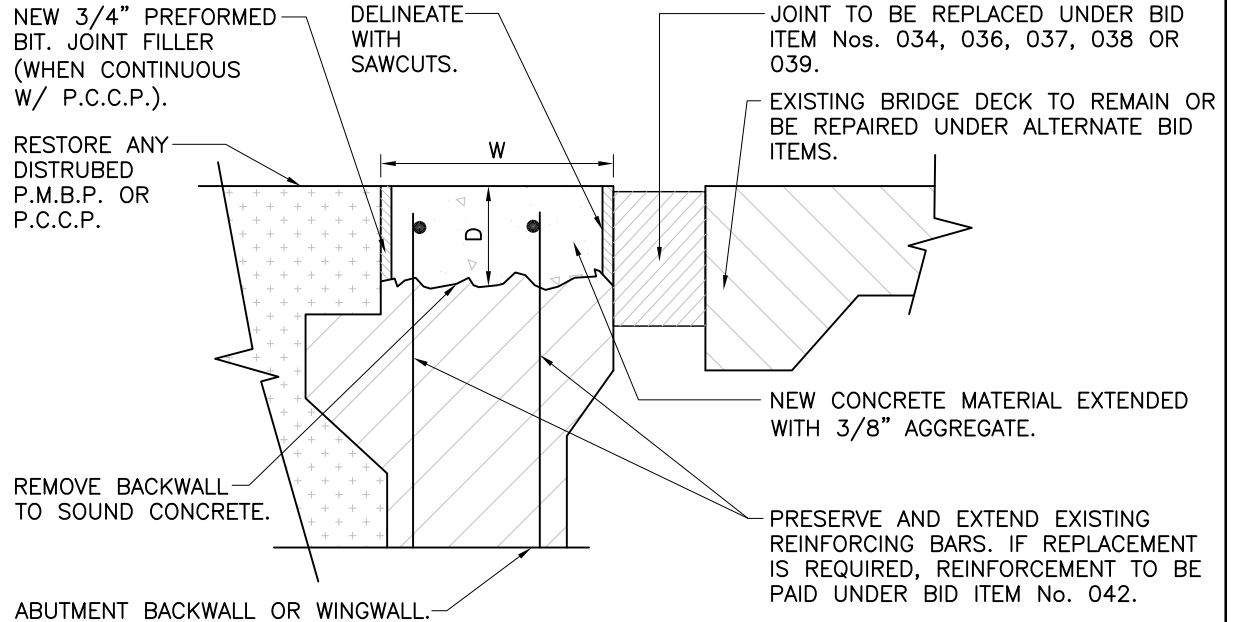
RAPID-SET-CONCRETE MAY BE USED AT THE DISCRETION OF THE PROJECT MANAGER.

UNIT BID PRICE IS FOR THE FIRST 10". THE CONTRACTOR WILL BE PAID 2% EXTRA FOR EACH ADDITIONAL INCH OF DEPTH BEYOND 10" DIRECTED TO BE REMOVED.

RESOURCE REQUIREMENTS:
NEW SUPERSTRUCTURES CONCRETE, FORMING, AND PLACEMENT PROCEDURES.

REFERENCES:
SECTION 510, SECTION 511, SECTION 533, AND SECTION 540 OF THE NEW MEXICO DEPARTMENT OF TRANSPORTATION STANDARD SPECIFICATIONS FOR HIGHWAY AND BRIDGE CONSTRUCTION, CURRENT EDITION.

TYPICAL DETAIL - BID ITEM 042



BACKWALL REPLACEMENT

W-WIDTH VARIES: 1'-0" MIN. ± TO 1'-9" MAX. ±
D-DEPTH VARIES: UP TO MAXIMUM DEPTH OF 10"

3			
2			
1			
NO.	DESCRIPTION	DATE	BY
REVISIONS			
NEW MEXICO STATE DEPARTMENT OF TRANSPORTATION			
BRIDGE REPAIR PRICE AGREEMENT			
BID ITEM 042 BACKWALL REPLACEMENT			

TITLE:

APPROACH SLAB REPAIR AND REPLACEMENT

DESCRIPTION:

REMOVAL OF EXISTING UNSOUND CONCRETE AND REINFORCEMENT, FORMING AND PLACEMENT OF CONCRETE AND JOINT SEALS. (REPLACEMENT OF REBAR MAY BE REQUIRED. REPLACEMENT OF REBAR IN EXCESS OF 4,000 LBS. WILL BE PAID UNDER BID ITEM No. 048).

LIMITATIONS:

AREA OF REPAIR TO BE MARKED IN THE FIELD BY THE CONTRACTOR AND APPROVED BY THE PROJECT MANAGER.

CONSTRUCTION PROCEDURE:

PREPARE SURFACE BY REMOVING ALL DETERIORATED CONCRETE, DIRT, OIL, GREASE AND OTHER BOND INHIBITING MATERIAL; REMOVAL OF UNSOUND CONCRETE TO THE FULL DEPTH OF SLAB; THE EXISTING EXPOSED REBAR SHALL BE SANDBLASTED TO REMOVE ALL DELETERIOUS MATERIAL, RESTORED TO ITS ORIGINAL SHAPE AND REPLACED IF NEEDED. APPLY PATCHING MATERIAL IN ACCORDANCE WITH MANUFACTURER'S RECOMMENDATIONS.

MAY REQUIRE REMOVAL OF UP TO 18" OF UNSUITABLE BASE MATERIAL AND REPLACEMENT WITH BASE COURSE TO 95% MODIFIED PROCTOR DENSITY.

RAPID-SET-CONCRETE MAY BE USED AT THE DISCRETION OF THE PROJECT MANAGER.

UNIT BID PRICE IS FOR THE FIRST 12". THE CONTRACTOR WILL BE PAID 10% EXTRA FOR ADDITIONAL INCH OF DEPTH BEYOND 12" DIRECTED TO BE REMOVED.

RESOURCE REQUIREMENTS:

APPROVED PATCHING MATERIAL OR APPROVED EQUAL, FORMING AND PLACEMENT PROCEDURE.

REFERENCES:

SPECIAL PROVISIONS FOR SECTION 210 (EXCAVATION AND BACKFILL FOR MAJOR STRUCTURES) DATED 01/29/15, SPECIAL PROVISIONS FOR SECTION 512 (SUPERSTRUCTURE CONCRETE) DATED 02/02/15, SECTION 210, SECTION 511, SECTION 512, AND SECTION 533 OF THE NEW MEXICO DEPARTMENT OF TRANSPORTATION STANDARD SPECIFICATIONS FOR HIGHWAY AND BRIDGE CONSTRUCTION, CURRENT EDITION.

TYPICAL DETAIL ITEMS 043, 044, & 045

EXISTING REINFORCEMENT TO BE PRESERVED. IF REPLACEMENT IS REQUIRED, REINFORCEMENT IN EXCESS OF 4,000 LBS. TO BE PAID UNDER BID ITEM No. 048 - REINFORCING BARS.

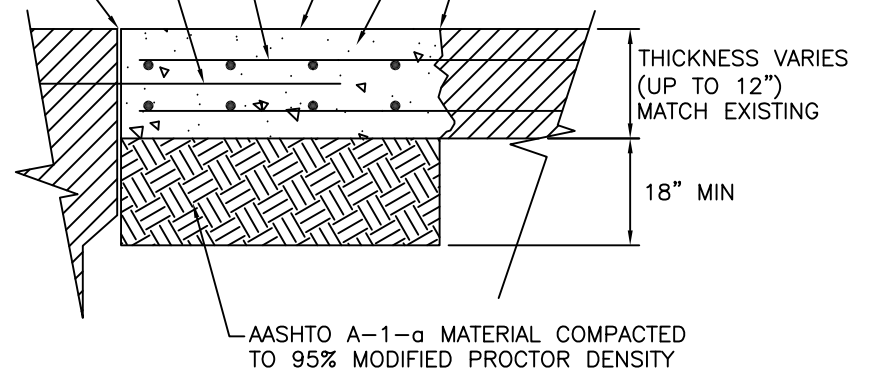
DRILL AND DOWEL 1'-0" #6 BAR IN 6" HOLE @ 1'-6" SPACING

1/2" JOINT SEAL

NEW SUPERSTRUCTURE CONCRETE

REMOVE FULL THICKNESS OF SLAB

DELINEATE AREA W/ 3/4" DEEP SAWCUT (TYP.)



APPROACH SLAB REPAIR AND REPLACEMENT

NO.	DESCRIPTION	DATE	BY
3			
2			
1			
REVISIONS			
NEW MEXICO STATE DEPARTMENT OF TRANSPORTATION			
BRIDGE REPAIR PRICE AGREEMENT			
BID ITEMS 043, 044, AND 045 APPROACH SLAB REPAIR AND REPLACEMENT			